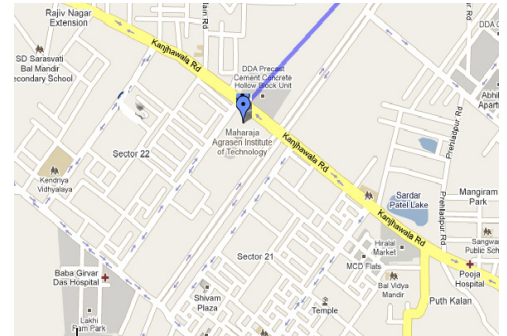


# Mandatory Disclosure

- |    |  |   |
|----|--|---|
| 1. | AICTE File No.                                   | 786-61-208(e)/ET/99   |
|    | Date & Period of last approval                   | 30-06-2009      2009-2010 for B.Tech. Courses<br>30-06-2009      2009-2011 for 2 <sup>nd</sup> Shift B.Tech. Courses<br>30-06-2009      2009-2011 for PG Courses<br>10-05-2012      All B.Tech and PG Courses |
| 2. | Name of the Institution                          | Maharaja Agrasen Institute of Technology  |
|    | Address of the Institution                       | Maharaja Agrasen Chowk, Plot No.1, Sector-22, Rohini  |
|    | City & Pin Code                                  | Delhi – 110 086   |
|    | State / UT                                       | UT  |
|    | Longitude & Latitude                             | 28° - 43'-5" N    77° - 3'-57" E  |
|    | Phone number with STD code                       | 011-65151163  |
|    | Fax number with STD code                         | 011-27582095  |
|    | Office hours at the Institution                  | 9.00 A.M. to 5.00 P.M.  |
|    | Academic hours at the Institution                | 8.00 A.M. to 7.00 P.M.  |
|    | Email  | <a href="mailto:mait@mait.ac.in">mait@mait.ac.in</a>  |
|    | Website  | <a href="http://www.mait.ac.in">www.mait.ac.in</a>  |
|    | Nearest Railway Station (dist in Km)             | Shakur Basti 15km   |
|    | Nearest Airport (dist in Km)                     | IGIAP 25 km.  |
| 3. | Type of Institution                              | Private-Self Financed:  |
|    | Category (1) of the Institution                  | Non Minority  |
|    | Category (2) of the Institution                  | Co-Ed   |
| 4. | Name of the organization running The Institution | Maharaja Agrasen Technial Education Society (Regd.)   |
|    | Type of the organization                         | Society/Trust/PPP   |
|    | Address of the organization                      | Maharaja Agrasen Chowk, Plot No.1, Sector-22, Rohini,<br>Delhi – 110 086  |
|    | Registered with                                  | Registrar of Societies, Delhi   |
|    | Registration date                                | 2/07/1998   |
|    | Website of the organization                      | <a href="http://www.mait.ac.in">www.mait.ac.in</a>  |





|  |                           |      |      |      |                                     |
|--|---------------------------|------|------|------|-------------------------------------|
|  | 2 <sup>nd</sup> Shift(UG) | -    | -    | -    | -                                   |
| % Students passed with First Class     | 1 <sup>st</sup> Shift(UG) | 81   | 88   | 78   | -                                   |
|  | 2 <sup>nd</sup> Shift(UG) | -    | -    | -    | -                                   |
| Students Placed                        | 1 <sup>st</sup> Shift(UG) | 91   | 116  | 210  | 118                                 |
|  | 2 <sup>nd</sup> Shift(UG) | -    | -    | -    | (1 <sup>st</sup> +2 <sup>nd</sup> ) |
| Average Pay package, Rs./Year lacs P.A | 1 <sup>st</sup> Shift(UG) | 3.20 | 3.20 | 3.20 | 3.20                                |
|  | 2 <sup>nd</sup> Shift(UG) | -    | -    | -    | (1 <sup>st</sup> +2 <sup>nd</sup> ) |
| Students opted for Higher Studies      | 1 <sup>st</sup> Shift(UG) | 05   | 08   | 08   | 08                                  |
|  | 2 <sup>nd</sup> Shift(UG) | -    | -    | -    | -                                   |

Accreditation Status of the course ISO 9001:2008 Certified  
 Doctoral Courses No  
 Foreign Collaborations, if any No  
 Professional Society Memberships IEEE, CSI,SAE, IETE, CII  
 Professional activities Lectures and competitions  
 Consultancy activities Nil  
 Grants fetched DST  
 Departmental Achievements **Annexure IV**  
 Distinguished Alumni Nil

Name of the Department **Information Technology**  
 Course B.Tech. Information Technology  
 Level UG/PG  
 1<sup>st</sup> Year of approval by the Council 1<sup>st</sup> Shift -1999 2<sup>nd</sup> Shift-2012

|  |                           | 2009-10 | 2010-11 | 2011-12 | 2012-13 |
|--|---------------------------|---------|---------|---------|---------|
| Year wise Sanctioned Intake            | 1 <sup>st</sup> Shift(UG) | 60      | 60      | 60      | 120     |
|  | 2 <sup>nd</sup> Shift(UG) | -       | -       | -       | 60      |
| Year wise Actual Admissions            | 1 <sup>st</sup> Shift(UG) | 60      | 60      | 58      | 119     |
|  | 2 <sup>nd</sup> Shift(UG) | -       | -       | -       | 60      |
| Cut off marks - General quota (Rank)   | 1 <sup>st</sup> Shift(UG) | 3551    | 3462    | 4509    | 5352    |
|  | 2 <sup>nd</sup> Shift(UG) | -       | -       | -       | 7035    |
| % Students passed with Distinction     | 1 <sup>st</sup> Shift(UG) | 06      | 25      | 14      | -       |
|  | 2 <sup>nd</sup> Shift(UG) | -       | -       | -       | -       |
| % Students passed with First Class     | 1 <sup>st</sup> Shift(UG) | 47      | 85      | 39      | -       |
|  | 2 <sup>nd</sup> Shift(UG) | -       | -       | -       | -       |
| Students Placed                        | 1 <sup>st</sup> Shift(UG) | 41      | 49      | 91      | 34      |
|  | 2 <sup>nd</sup> Shift(UG) | -       | -       | -       | -       |
| Average Pay package, Rs./Year lacs P.A | 1 <sup>st</sup> Shift(UG) | 3.20    | 3.20    | 3.20    | 3.20    |
|  | 2 <sup>nd</sup> Shift(UG) | -       | -       | -       | -       |
| Students opted for Higher Studies      | 1 <sup>st</sup> Shift(UG) | 05      | 04      | 05      | 05      |
|  | 2 <sup>nd</sup> Shift(UG) | -       | -       | -       | -       |

Accreditation Status of the course ISO 9001:2008 Certified  
 Doctoral Courses No  
 Foreign Collaborations, if any No  
 Professional Society Memberships IEEE, CSI,SAE, IETE, CII  
 Professional activities Lectures and competitions  
 Consultancy activities Nil  
 Grants fetched DST  
 Departmental Achievements **Annexure IV**  
 Distinguished Alumni Nil

Name of the Department **Electronics & Communication**

Course  
Level  
1<sup>st</sup> Year of approval by the Council

B.Tech. Electronics and Communication  
UG/PG  
1<sup>st</sup> Shift -1999      2<sup>nd</sup> Shift-2010

|  |                           | 2009-10 | 2010-11 | 2011-12 | 2012-13 |
|--|---------------------------|---------|---------|---------|---------|
| Year wise Sanctioned Intake            | 1 <sup>st</sup> Shift(UG) | 120     | 120     | 120     | 121     |
|  | 2 <sup>nd</sup> Shift(UG) | -       | 60      | 60      | 60      |
| Year wise Actual Admissions            | 1 <sup>st</sup> Shift(UG) | 120     | 120     | 117     | 120     |
|  | 2 <sup>nd</sup> Shift(UG) | -       | 57      | 59      | 58      |
| Cut off marks - General quota (Rank)   | 1 <sup>st</sup> Shift(UG) | 2056    | 1966    | 2568    | 3156    |
|  | 2 <sup>nd</sup> Shift(UG) | -       | 3318    | 4293    | 5413    |
| % Students passed with Distinction     | 1 <sup>st</sup> Shift(UG) | 18      | 15      | 40      | -       |
|  | 2 <sup>nd</sup> Shift(UG) | -       | -       | -       | -       |
| % Students passed with First Class     | 1 <sup>st</sup> Shift(UG) | 89      | 76      | 69      | -       |
|  | 2 <sup>nd</sup> Shift(UG) | -       | -       | -       | -       |
| Students Placed                        | 1 <sup>st</sup> Shift(UG) | 79      | 114     | 158     | 60      |
|  | 2 <sup>nd</sup> Shift(UG) | -       | -       | -       | -       |
| Average Pay package, Rs./Year lacs P.A | 1 <sup>st</sup> Shift(UG) | 3.20    | 3.20    | 3.20    | 3.20    |
|  | 2 <sup>nd</sup> Shift(UG) | -       | -       | -       | -       |
| Students opted for Higher Studies      | 1 <sup>st</sup> Shift(UG) | 5       | 5       | 5       | 5       |
|  | 2 <sup>nd</sup> Shift(UG) | -       | -       | -       | -       |

Accreditation Status of the course      Yes.2007 & ISO 9001:2008 Certified  
 Doctoral Courses      No  
 Foreign Collaborations, if any      No  
 Professional Society Memberships      IEEE, CSI,SAE, IETE, CII  
 Professional activities      Lectures and competitions  
 Consultancy activities      Nil  
 Grants fetched      DRDO  
 Departmental Achievements      **Annexure IV**  
 Distinguished Alumni      Nil

Name of the Department  
Course  
Level  
1<sup>st</sup> Year of approval by the Council

**Electrical & Electronics Engineering**  
B.Tech. Electrical & Electronics Engineering  
UG  
1<sup>st</sup> Shift -2004      2<sup>nd</sup> Shift-2010

|  |                           | 2009-10 | 2010-11 | 2011-12 | 2012-13 |
|--|---------------------------|---------|---------|---------|---------|
| Year wise Sanctioned Intake            | 1 <sup>st</sup> Shift(UG) | 60      | 60      | 60      | 120     |
|  | 2 <sup>nd</sup> Shift(UG) | -       | 60      | 60      | 60      |
| Year wise Actual Admissions            | 1 <sup>st</sup> Shift(UG) | 60      | 59      | 57      | 119     |
|  | 2 <sup>nd</sup> Shift(UG) | -       | 57      | 57      | 60      |
| Cut off marks - General quota (Rank)   | 1 <sup>st</sup> Shift(UG) | 3828    | 4265    | 4652    | 7305    |
|  | 2 <sup>nd</sup> Shift(UG) | -       | 5424    | 6702    | 8578    |
| % Students passed with Distinction     | 1 <sup>st</sup> Shift(UG) | 08      | 11      | 08      | -       |
|  | 2 <sup>nd</sup> Shift(UG) | -       | -       | -       | -       |
| % Students passed with First Class     | 1 <sup>st</sup> Shift(UG) | 34      | 41      | 33      | -       |
|  | 2 <sup>nd</sup> Shift(UG) | -       | -       | -       | -       |
| Students Placed                        | 1 <sup>st</sup> Shift(UG) | 18      | 22      | 36      | 12      |
|  | 2 <sup>nd</sup> Shift(UG) | -       | -       | -       | -       |
| Average Pay package, Rs./Year lacs P.A | 1 <sup>st</sup> Shift(UG) | 3.20    | 3.20    | 3.20    | 3.20    |
|  | 2 <sup>nd</sup> Shift(UG) | -       | -       | -       | -       |
| Students opted for Higher Studies      | 1 <sup>st</sup> Shift(UG) | 04      | 03      | 03      | 03      |
|  | 2 <sup>nd</sup> Shift(UG) | -       | -       | -       | -       |

Accreditation Status of the course      ISO 9001:2008 Certified  
 Doctoral Courses      No

Foreign Collaborations, if any No  
Professional Society Memberships IEEE, CSI, SAE, IETE, CII  
Professional activities Lectures and competitions  
Consultancy activities Nil  
Grants fetched DRDO  
Departmental Achievements **Annexure IV**  
Distinguished Alumni Nil

Name of the Department **Mechanical & Automation Engineering**  
Course B.Tech. Mechanical & Automation Engineering  
Level UG/PG  
1<sup>st</sup> Year of approval by the Council 1<sup>st</sup> Shift -1999 2<sup>nd</sup> Shift-2009

|  |                           | 2009-10 | 2010-11 | 2011-12 | 2012-13 |
|--|---------------------------|---------|---------|---------|---------|
| Year wise Sanctioned Intake            | 1 <sup>st</sup> Shift(UG) | 120     | 121     | 121     | 120     |
|  | 2 <sup>nd</sup> Shift(UG) | 60      | 60      | 60      | 60      |
| Year wise Actual Admissions            | 1 <sup>st</sup> Shift(UG) | 120     | 121     | 115     | 116     |
|  | 2 <sup>nd</sup> Shift(UG) | 60      | 60      | 58      | 55      |
| Cut off marks - General quota (Rank)   | 1 <sup>st</sup> Shift(UG) | 3980    | 3583    | 3935    | 3905    |
|  | 2 <sup>nd</sup> Shift(UG) | 5331    | 4854    | 5687    | 5790    |
| % Students passed with Distinction     | 1 <sup>st</sup> Shift(UG) | 03      | 03      | 31      | -       |
|  | 2 <sup>nd</sup> Shift(UG) | -       | -       | -       | -       |
| % Students passed with First Class     | 1 <sup>st</sup> Shift(UG) | 49      | 38      | 65      | -       |
|  | 2 <sup>nd</sup> Shift(UG) | -       | -       | -       | -       |
| Students Placed                        | 1 <sup>st</sup> Shift(UG) | 12      | 20      | 135     | 18      |
|  | 2 <sup>nd</sup> Shift(UG) | -       | -       | -       | -       |
| Average Pay package, Rs./Year lacs P.A | 1 <sup>st</sup> Shift(UG) | 3.20    | 3.20    | 3.20    | 3.20    |
|  | 2 <sup>nd</sup> Shift(UG) | -       | -       | -       | -       |
| Students opted for Higher Studies      | 1 <sup>st</sup> Shift(UG) | 05      | 05      | 05      | 05      |
|  | 2 <sup>nd</sup> Shift(UG) | -       | -       | -       | -       |

Accreditation Status of the course Yes.2007 & ISO 9001:2008 Certified  
Doctoral Courses No  
Foreign Collaborations, if any No  
Professional Society Memberships IEEE, CSI, SAE, CII  
Professional activities Lectures and competitions  
Consultancy activities Nil  
Grants fetched DSIR/AICTE  
Departmental Achievements **Annexure IV**  
Distinguished Alumni Nil

Name of the Department **Masters in Business Administration**  
Course MBA. Masters in Business Administration  
Level PG  
1<sup>st</sup> Year of approval by the Council 1<sup>st</sup> Shift -2004 2<sup>nd</sup> Shift- 2012

|                                      |                           | 2009-10 | 2010-11 | 2011-12 | 2012-13 |
|--------------------------------------|---------------------------|---------|---------|---------|---------|
| Year wise Sanctioned Intake          | 1 <sup>st</sup> Shift(PG) | 60      | 60      | 120     | 120     |
|                                      | 2 <sup>nd</sup> Shift(PG) | -       | -       | -       | 60      |
| Year wise Actual Admissions          | 1 <sup>st</sup> Shift(PG) | 60      | 60      | 120     | 120     |
|                                      | 2 <sup>nd</sup> Shift(PG) | -       | -       | -       | 60      |
| Cut off marks - General quota (Rank) | 1 <sup>st</sup> Shift(PG) | 589     | 589     | 1127    | 740     |
|                                      | 2 <sup>nd</sup> Shift(PG) | -       | -       | -       | 1474    |
| % Students passed with Distinction   | 1 <sup>st</sup> Shift(PG) | 50      | 50      | 49      | -       |
|                                      | 2 <sup>nd</sup> Shift(PG) | -       | -       | -       | -       |
| % Students passed with First Class   | 1 <sup>st</sup> Shift(PG) | 10      | 10      | 09      | -       |
|                                      | 2 <sup>nd</sup> Shift(PG) | -       | -       | -       | -       |
| Students Placed                      | 1 <sup>st</sup> Shift(PG) | 21      | 21      | 54      | 16      |

|  |                           |      |      |      |      |
|--|---------------------------|------|------|------|------|
|  | 2 <sup>nd</sup> Shift(PG) | -    | -    | -    | -    |
| Average Pay package, Rs./Year lacs P.A | 1 <sup>st</sup> Shift(PG) | 3.20 | 3.20 | 3.20 | 3.20 |
|  | 2 <sup>nd</sup> Shift(PG) | -    | -    | -    | -    |
| Students opted for Higher Studies      | 1 <sup>st</sup> Shift(PG) | -    | -    | -    | -    |
|  | 2 <sup>nd</sup> Shift(PG) | -    | -    | -    | -    |

Accreditation Status of the course ISO 9001:2008 Certified  
 Doctoral Courses No  
 Foreign Collaborations, if any No  
 Professional Society Memberships No  
 Professional activities Lectures and competitions  
 Consultancy activities Nil  
 Grants fetched Nil  
 Departmental Achievements **Annexure IV**  
 Distinguished Alumni Nil

13. Name of Teaching Staff\* **Annexure V**
- Designation -do-
- Department -do-
- Date of Joining the Institution -do-
- Qualifications with Class/Grade -do-
- Experience in Years -do-
- Papers Published National Conferences International National Papers Presented in International
- PhD Guide? Give field & University Field University
- PhDs / Projects Guided PhDs Projects at Masters level
- Books Published / IPRs/ Patents
- Professional Memberships ISTE, CSI, CII
- Consultancy Activities -
- Awards
- Grants fetched DST,DRDO,DSIR,AICTE
- Interaction with Professional Institutions IETE, I.E.(India),CSI
14. Admission quota# 90% general 10% Management seats
- Entrance test / admission criteria CET being held by GGSIP University
- Cut off / last candidate admitted**

| Branch   | Shift                     | 2009-10 | 2010-11 | 2011-12 | 2012-13 |
|--|---------------------------|---------|---------|---------|---------|
| <b>Computer Science Engineering</b>              | 1 <sup>st</sup> Shift(UG) | 2472    | 2208    | 2513    | 2272    |
|  | 2 <sup>nd</sup> Shift(UG) | 4828    | 3999    | 4334    | 3914    |
| <b>Electronics and Communication Engineering</b> | 1 <sup>st</sup> Shift(UG) | 2056    | 1966    | 2568    | 3156    |

|  |                           |      |      |      |      |
|--|---------------------------|------|------|------|------|
|  | 2 <sup>nd</sup> Shift(UG) | -    | 3818 | 4293 | 5413 |
| <b>Information Technology</b>                | 1 <sup>st</sup> Shift(UG) | 3551 | 3462 | 4509 | 5352 |
|  | 2 <sup>nd</sup> Shift(UG) | -    | -    | -    | 7035 |
| <b>Mechanical and Automation Engineering</b> | 1 <sup>st</sup> Shift(UG) | 3980 | 3583 | 3935 | 3905 |
|  | 2 <sup>nd</sup> Shift(UG) | 5331 | 4854 | 5687 | 5790 |
| <b>Electrical and Electronics Engineer</b>   | 1 <sup>st</sup> Shift(UG) | 3828 | 4265 | 4652 | 7305 |
|  | 2 <sup>nd</sup> Shift(UG) | -    | 5424 | 6708 | 8578 |
| <b>Master Of Business Administration</b>     | 1 <sup>st</sup> Shift(PG) | 589  | 428  | 1127 | 740  |
|  | 2 <sup>nd</sup> Shift(PG) | -    | -    | -    | 1474 |

Fees in rupees

| Programme     | Shift                     | 2009-10 | 2010-11 | 2011-12  | 2012-13  |
|---------------|---------------------------|---------|---------|----------|----------|
| <b>B.Tech</b> | 1 <sup>st</sup> Shift(UG) | 75,000  | 75,000  | 97,250   | 97,250   |
|               | 2 <sup>nd</sup> Shift(UG) |         |         |          |          |
| <b>MBA</b>    | 1 <sup>st</sup> Shift(PG) | 87,500  | 87,500  | 1,06,725 | 1,06,725 |
|               | 2 <sup>nd</sup> Shift(PG) |         |         |          |          |

Number of Fee Waivers offered 6 (2012-13) , 19 (2011-12) , 7 (2010-11) , 8 (2009-10) , 7 (2008-09)

Admission Calendar June-July of every year

PIO quota No

15. Infrastructural information^

Classroom/Tutorial Room facilities Class rooms = 52, Tut.Rooms = 22

Laboratory details 68 laboratories **Annexure VI**

Computer Centre facilities Computer Centre(150+150)= 300 sq.m. **Annexure VII**

Library Facilities 1200 sq.m  
Auditorium / Seminar Halls / Am phi  
1 Auditorium,  
1 Mini Auditorium  
1 Am phi Theater  
8 Seminar Hall  
1 Audio Visual Laboratory

Cafeteria One 150 sq.m

Indoor Sports facilities T.T, Billiards, Gym, Carom

Outdoor Sports facilities Badminton, Volleyball, Football, Cricket

Gymnasium facilities Gym available

Facilities for disabled Availability of ramp facility in each block

Any other facilities Vivekananda Meditation Centre

Maharaja Agrasen Open Library

|     |   |  |
|-----|---|--|
| 16. | Boys Hostel                             | Yes for 196 students                                   |
|     | Girls Hostel                            | Yes for 103  |
|     | Medical & other Facilities at Hostel    | Yes  |
| 17. | Academic Sessions                       | Aug. to Dec.                  Jan. to June             |
|     | Examination system, Year / Sem          | Semester System  |
|     | Period of declaration of results        | About one month after the last examination paper       |
| 18. | Counseling / Mentoring                  | being done 20 students to one teacher counselor        |
|     | Career Counseling                       | being done by Training & Placement Deptt.              |
|     | Medical facilities                      | Yes  |
|     | Student Insurance                       | No   |
| 19. | Students Activity Body                  | Sport Society IEEE, SAE, CSI, IETE, Green Society      |
|     | Cultural activities                     | Cultural Society : SPARK                               |
|     | Sports activities                       | Various sports and Athletics activities are being done |
|     | Literary activities                     | TECHSURGE & MRIDANG                                    |
|     | Magazine / Newsletter                   | Institute Magazine Agrani Sankalp                      |
|     | Technical activities / TechFest         | Once a year Techsurge                                  |
|     | Industrial Visits / Tours               | 1 to 2 per semester                                    |
|     | Alumni activities                       | once a year  |
| 20. | Name of the Information Officer for RTI | Sh.S.B.Sharma  |
|     | Designation                             | Registrar  |
|     | Phone number with STD code              | 011-65647742   |
|     | FAX number with STD code                | 011-27582095   |
|     | Email                                   | -  |



## Annexure I

### Governing Board Members

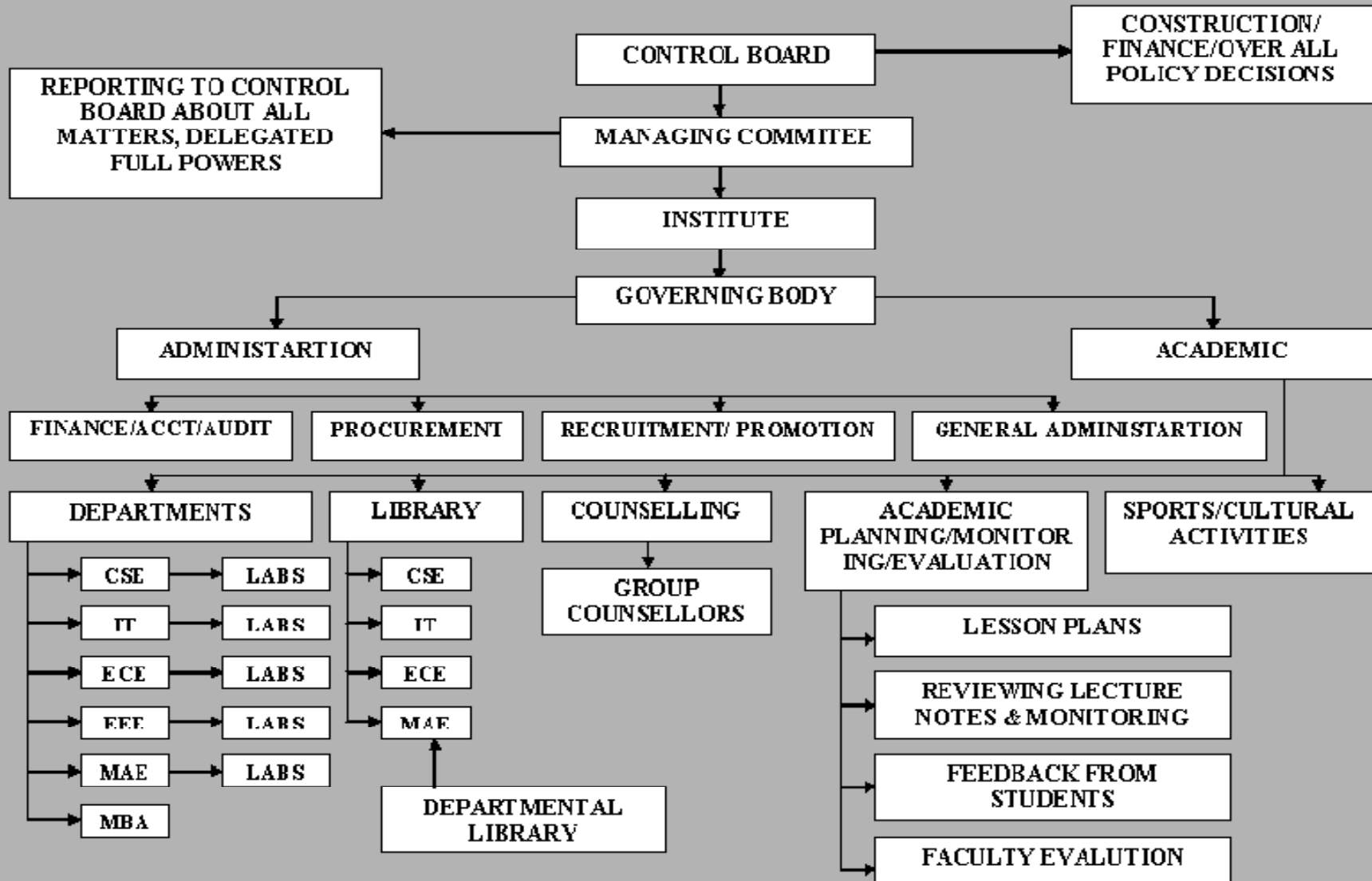
| S. No. | Name   | Address  | Contact No | Academic Background |               | Industry Rep. |
|--------|--|--|------------|---------------------|---------------|---------------|
|        |  |  |            | Technical           | Non Technical |               |
| 1      | Dr. Nand Kishore Garg<br>Chairman                                      | 10/4, East Punjabi Bagh, New Delhi - 110026            | 9811202205 |                     | √             | √             |
| 2      | Sh. Tek Chand Gupta<br>Member  | 1/17, Jaidev Park, East Punjabi Bagh, New Delhi-110026 | 9810312505 |                     | √             | √             |
| 3      | Sh. T.R. Garg<br>Member  | BP-7, Shalimar Bagh (West), Delhi-110088               | 9811082040 | √                   |               | √             |
| 4      | Sh. R.C. Chharia<br>Member   | 3/35, Punjabi Bagh, (West), New Delhi-110026           | 9811156550 |                     | √             | √             |
| 5      | Sh. Brij Bhushan Gupta<br>Member                                       | 5/6, Jaidev Park, East Punjabi Bagh, New Delhi-110026  | 9810260101 |                     | √             | √             |
| 6      | Sh. Satish Chand Gupta<br>Member                                       | 259, Deepali, Pitampura, Delhi-110034                  | 9811043690 | √                   |               | √             |
| 7      | Representative of AICTE, Regional Officer, Member                      | Regional Officer, Chandigarh                           |            | √                   |               |               |
| 8      | Representative from Industry Nominated by AICTE, Member                |  |            | √                   |               |               |
| 9      | Representative of GGSIP University, Member                             |  |            |                     |               |               |
| 10     | Director of Technical Education-State Govt. nominee, Member            |  |            |                     |               |               |
| 11     | Industrialist/Technologist/Educationist-Nominee of State Govt., Member |  |            | √                   |               |               |
| 12     | Prof. V. K. Jain, Member   | Professor, MAIT  | 9999985210 | √                   |               |               |
| 13     | Ms.Amita Goel, Member  | Assistant Professor, MAIT                              | 9810239354 | √                   |               |               |
| 14     | Prof. M. L. Goyal<br>Member Secretary                                  | Director, MAIT   | 9810293284 | √                   |               |               |

## Annexure II

### Academic Advisory Body

| <b>S. No.</b> | <b>Name</b>                       | <b>Address</b>  | <b>Contact No</b> |
|---------------|-----------------------------------|---|-------------------|
| 1             | Dr. Nand Kishore Garg<br>Chairman | 10/4, East Punjabi Bagh, New Delhi -<br>110026            | 9811202205        |
| 2             | Sh. Tek Chand Gupta<br>Member     | 1/17, Jaidev Park, East Punjabi Bagh,<br>New Delhi-110026 | 9810312505        |
| 3             | Sh. T.R. Garg<br>Member           | BP-7, Shalimar Bagh (West), Delhi-<br>110088              | 9811082040        |
| 4             | Sh. R.C. Chharia<br>Member        | 3/35, Punjabi Bagh, (West), New Delhi-<br>110026          | 9811156550        |

# MAHARAJA AGRASEN TECHNICAL EDUCATION SOCIETY



## Annexure IV

### New Initiatives & Achievements

**DATAQUEST-CMR Survey of Top 100 T-Schools (DATA QUEST, December 15, 2012 Issue) has placed MAIT at the 21<sup>th</sup> Rank. (Rank in 2011 & 2010 were 25<sup>th</sup> & 29<sup>th</sup> respectively)**

### Department of Computer Science and Engineering

#### **Strength/Achievements**

The department has initiated many programs to augment the skills and value addition program of the faculty members.

In academic year 2011-12, various FDP's were organized in CSE Department. All the FDP's held were informative and enhanced the knowledge by a large extent. Also it helped in enhancing the practical knowledge as all the FDP's stressed upon the practical demo and implementation part.

- On 2nd May 2012 a workshop was organized on the "Network Security" Topic, in which the speaker Mr. Suman Chakravorty, Technical Consultant, NIIT Technology talked about the various security issues over network and discussed the mechanism to create a secure network including the issues about networking basics, data packet structure, networking protocols, loopholes in transferring data on the network, identifying the loopholes and prevent them and also the practical demo about the same.
- From 6th May 2012 to 7th May 2012 a workshop on "NS2- Network Simulation Tool", was conducted by Mr. Neeraj Garg and Ms. Pooja Gupta. In the workshop they discussed about the basics and installation of the Tool and also the practical demo of the simulator were shown for different networking protocols.
- On 26th June 2012 and 27th June 2012 a workshop on "Statistical Data Mining Using MATLAB", was conducted and the speakers Dr.Dwijesh, Ms.Anu and Mr.Sanjeev, Faculty IASRI, PUSA discussed about Data Mining, Cluster Analysis, Classification Techniques and practical implementation of R System in cluster and support Vector Machines using MATLAB and R System.
- On 7th August 2012, Mr. Farzil Kidwai conducted a workshop on "Flash Animation" and discussed about usage of Flash in Presentation making and Web based applications.
- On 10-11 November, 2012 a two day workshop was held on "Aakash for Education" under MHRD by IIT Bombay at MAIT campus.

Department helps sister institution to trained their faculty and students during summer vacation.

Also our faculty members regularly attend workshop/conferences/seminars organized by other engineering college.

Out of total 33 faculties in the CSE dept, one faculty is awarded PhD in session 2011-2012, about 9 faculty members are pursuing research work towards PhD degree and 6 faculties have already registered themselves in different universities, 10 faculties have completed their post-graduation (M.Tech.) resulting total 28 M.Tech. They have published their research work in reputed international and national journals and conferences. Faculty has also contributed by publishing books on different topics like Software Engineering, Computer networks, Multimedia, databases, Software Testing.

The Department also encouraged and support technical and non technical activity of the students. Industrial visits are regularly organized by CSE dept for students. Large number of students of CSE department participates in the

project competition being organized by IBM (TGMC 10). The department has also established a software development cell for undertaking real projects. An Android group is formed by the faculties and students of CSE dept to develop applications on Android for Mobile and tablets. Students under guidance of faculties are participating in Aakash Project of IIT Bombay for developing applications for Aakash 2 tablet.

We impart training in technologies, which are not part of the university syllabus, to our students during lab hours. INFOSYS campus connect programme for students is conducted by CSE with Infosys.

Right from 1<sup>st</sup> year, students are encouraged to do projects. They are given a list of project from which they can choose any of their choice. Students do simulation of the experiments in the non-computer engineering labs. Final year students publish their papers in national and international journals and conferences as part of the Seminar. Few papers list includes:

- Akriti Bahal, Rachit gupta, Ms. Ruchi Goel, “The New Touchscreens – Skinput, sixthsense or Omnitouch”, IEEE 4<sup>th</sup> International Conference on Intelligent Human Computer Interaction, IIT Kharagpur, India, December 27-29, 2012.
- Sinchan Bhattacharya, “Parameters for applying data mining in fuzzy systems”, accepted manuscript as a book chapter in Data Mining in Dynamic Social Networks and Fuzzy Systems, IGI GLOBAL.
- Sinchan Bhattacharya, “Fuzzy Data Mining: A Literature Survey and Classification”, International Journal of Networking and Virtual Organizations (IJNVO), Volume.11, Issue 3/4, Inderscience publishers.
- Sinchan Bhattacharya, “Virtual Shopping Environment”, In the proceedings “Communications Technologies and Its impact on Next Generation Computing (CTNGC-2012)”, 20th October, 2012.
- Sinchan Bhattacharya, “Handling fault tolerance in different topologies via Rain Computing” International Journal of Computer Science and Management Research (IJCSMR), Volume 1, Issue. 4, pp. 964-970.

It is pride for the dept that our students are placed in various companies like Infosys, Accneture, HCL, L&T etc. Our two third year students (Eklavya Mirani and Saba Chaudhary) have been selected by Microsoft.

Our students showed excellent performance in IP university

- Nishtha Jain ranked III in IPU in II year
- Gagan Vasudev ranked IV in IPU in II year
- Deepali Gupta ranked V in IPU in IV year

The improvement of Labs is the continuous process in the department. Labs are upgraded with latest computer configurations. Laptops are given to merit holder students.

Fiber enabled Internet connectivity is available to all the blocks of the campus including Library and Hostel. Wi-Fi internet connection is provided in hostel and Computer center and is in process of implementation in campus in the coming year. Internet enabled Printer is provided in the campus for taking printing through internet by authorized users.

A new Server is setup for Internet Bandwidth Management and User Management in hostel.  
year.

## Department of Information Technology

### Strength/Achievements

#### Student Achievements

**1. Student Name: Gaurav Arora, Nirmitt Dhagga, Ankit Upadhyaya**

**Achievement:** First Prize in Debate and Quiz events at CSI Region - I Students

Convention (RSC-2012) organized by BVICAM

**2. Student Name: Raghav Bhandari**

**Achievement:** 2nd Prize in League of Legends Tournament at Indian Cyber Gaming

Championship (ICGC) Season IV held at Goa during 5th -7th Oct 2012.

**3. Student Name: Sarthak Punyani(IT), Sajal Sharma(IT), Rahul Kumar Mishra(IT)**

**Achievement:** Laser harp project won the Consolation Prize at the competition and a

Cash Prize of Rs.2000/- at Technoblast Competition organized on 24th

November 2012 at Dronacharya College of Engineering, Greater Noida.

#### Workshop

##### IT Department organizes Workshop on Cloud Computing on 20th October, 2012

A workshop for exposure of latest technologies and trends based on Cloud Computing, suggested by Prof.(Dr.) M. L. Goyal, Director, MAIT, was organized by IT Department in association with VMDD Technologies under the guidance of Dr. M. L. Sharma, HOD, IT on 20th October, 2012. The purpose of this workshop was to minimize the gap between the theory and practical aspects of Cloud Computing and related technologies. 60 faculty members from CSE, IT, ECE, MAE, EEE and Applied Sciences department attended the workshop.

##### Departmental Website

Vinay Kumar Saini, Assistant Professor, IT Department has created an Information Portal for IT Department. This portal is a common interface for all the stake holders like faculty, students and public users. This portal targets to disseminate important information and notifications to all.

**URL for the Information portal is <http://itmait.hpage.com>**

The portal has following sections

- **Welcome:** Brief introduction of IT Department and Director's Message.
- **Academics:** The Course briefing of B.Tech (IT) along with syllabus and lesson plans.
- **Society Activities:** Covers activities related to CSI, ISTE, etc.

- **Faculty:** covers faculty profiles, FDPs, Faculty Committees.
- **Students:** Covers Star Students, Projects, Technical Activities, Sports Activities,
- **Cultural Activities, Student Notices and Time Table.**
- **Courseware:** Covers subject wise assignments and previous year question papers
- **Technical Staff:** Covers profiles of non teaching staff of IT Department.
- **Words of Wisdom:** Inspirational Thoughts and words of famous personalities.
- **Suggestion Box:** This section allows any visitor to post suggestion for IT Department.
- **Picture galleries:** Covers picture collection of various events organized by IT Department.

## Industrial Visits

1. **Industrial & Educational Trip to High Power Transmitter, All India Radio(AIR) by IT Department:** An industrial trip for exposure of real working knowledge for B.Tech. (I.T.) 3rd semester students was organized by Department of Information Technology on 17th October, 2012. The motive of this industrial trip to AIR-HPT, Khampur, Delhi, was to provide the live working scenario in the field of communication system and associated upcoming technology. A group of 53 students of B.Tech. (IT) 3rd semester participated in this technical trip cum industrial visit.
2. **Industrial & Educational Visit to Doordarshan Bhavan by IT Department**

An industrial and educational visit of B.Tech.(I.T.) 5th semester students on 12th October, 2012 was organized by IT Department. The purpose of this technical industrial visit to Doordarshan Kendra Doordarshan Bhawan Copernicus Marg Connaught Place Delhi, was to minimize the gap between the theory and practical engineering practices. A group of 63 students of B.Tech.(I.T.) participated in this technical visit.

3. **Industrial visit to Prasar Bharti on 23 March 2012:** An industrial visit to Prasar Bharti , High Power Transmitter, Doordarshan Pitampura was organised by Department of Information Technology for sixth Semester students on March 23, 2012. Main coordinators of the visit were Mr Ajay Kaushik (Assistant Professor IT Department) and Ms Nidhi Sengar (Assistant Professor IT Department).Students were benefited by learning the Transmitter concepts, Earth Station, Role of Satellites in T.V Communication.

## **DEPARTMENT OF ELECTRICAL AND ELECTRONICS ENGINEERING**

### **Highlights/Initiative /Achievements**

The EEE Department was initiated in the institute in the year 2003 and our first batch passed out in the year 2007 with an excellent placement of over 80% students in well known engineering firms. Besides the routine academic activities, the department arranged three National level conferences/seminars in the last four years, entitled:

- 1) Relevance of energy optimization at distribution level.
- 2) National conference on energy communication and computer system (MC-ECC 2006).
- 3) Seminar on soft computing techniques, Dec. 21, 2007.

Besides the above programs, we conducted two Faculty Development Programmes.

EEE Department has well established all the relevant laboratories as per syllabus. However we attach great importance to simulation techniques. Keeping that in view we have purchased advanced software's like ETAP for simulation of power system problems, MATLAB for simulation techniques applied to controls, fuzzy, neural and genetic algorithms, EEE department is also making extensive progress in the field of simulated instrumentations using advanced software of LABVIEW, other software's like PSIM, MATLAB, LADSIM are also with the department which further helps the students to understand the subject thoroughly.

### **Strengths of Department**

The strength of the department is to produce students with quality technical education at par with global standards. The department strongly believes in well conducting the classes and supplements this educational process through technical seminars, hands on industrial oriented projects and technical visits from time to time(at least two in a semester)..

The EEE department is also very liberal in sending its faculty members to participate in workshops and conferences at International and National levels. This approach has helped us in having and retaining a highly qualified faculty with M.Techs and Ph.Ds. Two faculty members have completed their Ph.D and one has submitted Ph.D. thesis. Four faculty members are pursuing Ph.D. Nine have completed their M.Tech. during their stay at MAIT.

Two Technical Staff Members have completed their B.Tech and two are pursuing. One Lab. attendant completed his ITI.

The department is having its own departmental library with the facilities of technical books and the lecture series CD's of well renowned professors from IIT's etc.

The departmental is also engaged with the arrangement of summer Training Programmes every year for EEE students on a wide spectrum of technical issues.

The department also arranges extra/remedial class for the needy students from time to time.



## **Department of Mechanical and Automation Engineering**

### **Initiative/Achievements**

MAE Dept. has highly experienced and qualified faculty members which includes 6 Ph.Ds and 25 M.Techs. Faculty is encouraged to pursue higher studies. 6 faculty members are registered for Ph.D and 4 are pursuing M.tech. The deptt. is accredited by NBA, AICTE and is ISO-9001:2008 Certified. The deptt. has a collaboration with Auburn University and has recently got approval for M.Tech in MAE from AICTE. The faculty members are actively involved in Research. Prominent Areas of Research includes Cryogenic Machining, Machining of Composite Materials, Heat characteristics of array of impinging plane jets, Design and Development of Automation Systems for Artificial Limbs and Supply Chain Management. In 2009-10, 2<sup>nd</sup> Shift in the evening was started with an intake of 60 students in MAE Deptt.

Our faculty is invited for delivering guest lectures in prestigious organisations like DRDO, NPTI and other Institutes and some of the faculty members are in the reviewing panel of International Journals. Almost 90% students got placed in Software, Automobile & Multi National Companies.

Students are encouraged to participate actively in extra-curricular activities and project competitions. A team of our students, FSR(Falcon Sports Racing), participated in grand finale of FSAE JAPAN 2012, held during 3rd to 7th September 2012 at ECOPA (Ogasayama Sports Park), Shizuoka-ken, near Fukuroi city, Japan.

Various Industrial trips have been organized in August – September' 12. Trips were being organized for following Industries: Sadhu Forging Ltd., Faridabad, Amtek India Ltd, Bhiwadi, Haryana, Amtek Tekfor Automotive Ltd. , Manesar

A professional society SAE (Society of Automotive Engineers) is functional in the Department and both faculty members and students actively participate in various activities.

Mr. Manoj Soni is honoured with a National Award by President of India for Best Research/Innovation/Product Development for social welfare on 3<sup>rd</sup> December, 2009. He is working in the area of Development of Artificial Limb for the physically challenged. He has applied for two patents. He has recently published two papers in International Journals.

MAE Deptt. has state of the art equipments in FMS and Robotics Lab worth Rs. 45 lakhs which is not possess by any of the Pvt. Institute in Northern India. Department has updated laboratory with latest version of ProE, Solid Edge & Unigraphics software.

We have collaborated with Auburn University of MAE for 2 years studies at MAIT and 2 years at Auburn.

MAE Department conducted a National Conference on Computer Aided Design and Technology (NCCADT - 2012) on 21, April'12. Total 28 Papers were published. Sponsors were GGSIP University, CSIR, and Maharaja Agrasen Technical Education Society.

We also organized Faculty Development Program on 'Recent Development in mechanical and Automation engineering in July for 1 week. Certificates were being distributed to the faculties who successfully completed the same. Expert sessions were conducted by Industrial Professionals and various renowned Professors.

## Department of Electronics and Communication Engineering

### Initiative/Achievements

1. Department conducted two day national seminar on recent advances in microelectronic devices on 19<sup>th</sup> – 20<sup>th</sup> August 2011.
2. Department of Electronics and Communication Engineering organized a one day workshop on Mentor Graphics (Eldo Spice) software by Coreel, under FDP program, on 19<sup>th</sup> Dec. 2011
3. In house summer training program in the area of Digital hardware modeling, VLSI and embedded system was conducted for the students of MAIT during the period 09/06 /08 to 18/07/08 . Students from other colleges of NCR Delhi and other states were also enrolled for the training.
4. The department conducted faculty development program during 07/06/06 to 25/07/06 and during 06/12/05 to 16/12/05. The list of guest speakers and their area of their talk is attached.
3. A talk in the area of Circuit theory was delivered by Prof. S.C.Duttaroy, Fellow IEEE, IIT Delhi on 7<sup>th</sup> April 2006 .
4. Faculty training programme on VHDL 17/05/04 to 21/05/04 was conducted by the teachers of the department.

### **Achievement**

1. Students of final year had won second prize in the project competition organized by the Gurugobind Indraprastha university in the year 2005 .Project was Multi stage car parking.
2. Students of final year had won third prize in the project competition organized by the Gurugobind Indraprastha university in the year 2006 .Project was control of home appliance by mobile phone.
3. The project titled “Performance Improvement of Microstrip Antenna using PBG Structures” won second prize in University project competition in the session 2008-09.
4. 43 Projects carried out in the Department during the session 2009-2010.
5. The Project titled “Analysis of linear VCO using current Feedback Amplifier” won second prize in University project competition in the session 2009-10.
6. The Project titled “Implementation & design of current mirrors & temperature effect with compensation” won first prize in University project competition in the session 2010-11.

### **Student Result**

In the semester exams for the session 2009-2010 (Even Semester) 17 students secured above 90% marks in different subjects. More than 75% scores were secured by 367 students in different subjects.

### **Faculty Profile:**

There are 37 faculty members in ECE dept. Out of which 2 are Professor, 26 Asst. Profs., and 9 Lecturers.

- i. Three faculty members are PhDs
- ii. All the faculty members are M.Tech.
- iii. 10 Faculty members are enrolled in Ph.D.
- iv. 8 Faculty members have acquired their M.Tech degree after joining the institute under faculty development scheme of the institute.

During the session 2009-2010 three papers were published in international journals, 20 papers were published in national/international conferences by the faculty of ECE Department.

The department has following Audio visual Aids/Lecture CDs.

- |                              |   |    |
|------------------------------|---|----|
| 1. Digital Signal Processing | - | 43 |
| 2. Communication Engg.       | - | 41 |

|                                   |   |    |
|-----------------------------------|---|----|
| 3. Embedded Systems               | - | 37 |
| 4. Wireless Communication         | - | 39 |
| 5. Digital Communication          | - | 38 |
| 6. Signal & Systems               | - | 42 |
| 7. Analog Elect. Circuits         | - | 51 |
| 8. Microcomputers: Design & Appl. | - | 37 |
| 9. Computer Architectures         | - | 38 |
| 10. Image processing              | - | 22 |
| 11. Digital Hardware Design       | - | 37 |

## **RESEARCH:**

### **FACULTY IS ENGAGED IN VARIOUS RESEARCH ACTIVITIES DETAILED BELOW:**

1. Dr. Namita Gupta, Associate Professor and HOD, CSE Department – is awarded PhD in CSE. Her research topic is **Text Mining for Information Retrieval**.
2. Mr. Neeraj Garg, Asstt. Professor, CSE Department doing research in **Mobile Computing Systems**.
3. Mr. Alok Kumar, System Administrator, CSE Department doing research in **SW Testing and Security field**.
4. Ms. Pooja Gupta, Asstt. Professor, CSE Department doing research in **“Search Engine – Crawlers”**.
5. Mr. Deepika Kukeraja, Asstt. Professor, CSE Department doing research in **Mobile Ad-Hoc-Networks field**.
6. Mr. Ashish Khanna, Asstt. Professor, CSE Department doing research in **“Distributed Systems”**.
7. Mr. Deepak Sharma, Asstt. Professor, CSE Department doing research in **“Mobile Ad-Hoc-Networks field”**.

## **IT**

1. Dr. M.L.Sharma has guided 8 M.Tech students for their thesis work.
2. Ms. Amita Goel is doing research in the area of “Optimization Techniques for Watermarking and Authentication of Digital images”.
3. Ms. Bhoomi Gupta is pursuing Ph.D in the field of Computer Science in the specific area of Disaster Risk Management : ICT Advantage at Dept. of Computer Science,PTU,Jalandhar under the guidance of Dr. Rattan K. Datta (Dept. of Computer Sc,PTU)
4. Ms. Neelam Sharma doing research in the area of “Use of BI in ERP Systems
5. Vinay Kr Saini got registered in Ph.D in the field of Computer Science at Department of Computer Science, Gurukul Kangri Vishwavidyalaya, Haridwar under the Guidance of Dr. Vivek Kumar Asst.Prof. (Computer Science).
6. Mrs. Neha Agrawal is pursuing Ph.D in the field of Information Technology at Department of Information Department, RGPV,Bhopal under the Guidance of Dr. R.K. Gupta Prof. & Head(Computer Science).

## **ECE**

### **List of Faculty Members pursuing PhD :**

1. **Ganga Prasad Pandey**  
Registration in Ph.D from Uttarakhand Technical University, Dehradun ,UP.  
Topic: ”Some Investigation of Tunnble microstrip Antenna”
2. **Navneet Yadav :**  
Registration in Ph.D from Thapar University , Patiala(Pb) in 2009.  
Topic: “ Topic study and analyze the Image Adaptive Watermarking”
3. **Bhawna Aggarwal**

Registered for Ph.D. Programme in electronics department in the field of VLSI, in NIT Kurukshetra, in Nov. 2010. Topic of research is “An Investigation in the field of Low voltage / Low power Analog Circuit Design Techniques”.

**4. Dr. Sunil Mathur**

Completed his Ph.D. on the topic “Analysis and modeling of text/script in the field of Random Motion” from Singhania University in 2012.

**Books Published:**

1. Microprocessor 8086 Architecture, Programming and Interfacing by PHI, Jan 2011.
2. Microprocessor 8085 and Its Interfacing by PHI, Jan 2010.

**5. K L Pushkar**

Registration in Ph.D. from Jamia Millia Islamia University, Delhi in 2010.

Topic: “Some Investigation into the Design of Analog Circuits”

**6. D K Dwivedi**

Registered for Ph.D. program from DCE, Delhi University.

Topic: Microstrip Filter Design using EBG and Fractal Structures

## **EEE**

### **FACULTY IS ENGAGED IN VARIOUS RESEARCH ACTIVITIES DETAILED BELOW:**

1. Sh. Rajveer Mittal, Associate Professor and Head EEE Department has completed his Ph.D. on the topic “**POWER QUALITY STUDIES OF WIND ENERGY SYSTEMS**”
2. Sh. Satvir Singh Deswal, Associate Professor and Associate Dean (Academics) has completed (2<sup>nd</sup> Feb 2012) his Ph.D. on the topic “**STUDIES ON RIDE THROUGH CAPABILITIES FOR ADJUSTABLE SPEED DRIVES (ASD’S)**” FROM NIT, KURUKSHETRA.
3. Ms. Monika Gupta, Assistant Professor has submitted her Ph.D. thesis to Delhi University on the topic “**Some Studies On Power Quality Assessment and Control Using Soft Computing Techniques**”.
4. Ms. Neelu Nagpal, Assistant Professor is pursuing her Ph.D. on the topic “**Stability & Control of Haptic Interface**”.
5. Ms. Neelam Kassarwani, Assistant Professor is pursuing her Ph.D. on the topic “**Power Quality Enhancement Using Custom Power Devices**”.
6. Mr. L.P. Singh, Assistant Professor is pursuing his Ph.D. on the topic “**Power Quality Evaluation**”.
7. Mr. Ashok Goyal, Assistant Professor is pursuing his Ph.D. on the topic “**Maximum Power Point Tracking when obtaining power from wind using induction generator in self-excited mode. To connect the induction generator with electrical grid using Back-to-Back convertor and then matrix convertors**”.

## **MAE**

### **Dr. Manoj Soni (Associate Prof.) HOD**

Ongoing DSIR sponsored Project for delivering indigenously designed AK prosthesis to subjects at AIMS.

*International Journal Publications:*

- 1) Manoj Soni, Sneh Anand, S Maji; *Effect of shoe weight on swing of prosthesis components for transfemoral Amputees*; V international journal of research; August, 2012.
- 2) Manoj Soni, S Maji, Sneh Anand; *A PLC based gait phase identification for bilateral above knee prosthesis solution*; V International Journal of research, 2011.
- 3) Manoj Soni, S Maji, Sneh Anand, U Singh; *A CAD based dynamic analysis Approach to an Above knee prosthesis design*; Vibromechanica; Journal of Vibroengineering, 2010, volume 12(2) pg:
- 4) Manoj Soni, S Maji, Sneh Anand; *Modeling an above Knee Prosthesis – A kinematic Approach*; Vibromechanica, Journal of Vibroengineering; 2010, volume 12(2), pg :

***National Journals Publications:***

Manoj Soni, R Sagar, A K Ghosh; *F.E. Analysis To Use Mild Steel For A Tape Slit Die & Extrude Bio-Degradable Material*; The Institution of Engineers, Calcutta, India, November 2006.

***Patents Filed:***

- 1) Filed confirmed specifications on – title: “*A pneumatic Damper Controlled AK Prosthesis*”; Application Number – 886/ DEL/ 2009; 29-4-2009.
- 2) Filed confirmed specifications on – title: “*A prosthetic shoe for an artificially intelligent AK prosthesis*”; Application Number – 2745/ DEL/ 2007; 28-12-2007.

**Dr. Rishu Sharma (Asst. Prof.)**

***International Journal Publications:***

1. Rishu Sharma and Suresh Garg. (2012). *Spare Parts Management at Automobile Service Centre using Artificial Neural Network*. International Journal of Service, Economics and Management. Vol 4, No 2, pp 122-144.
2. Rishu Sharma and Suresh Garg. (2012). *Performance Optimization of Automobile Service Centre using Taguchi Approach*. International Journal of Services and Operations Management. Vol 12, No 2, pp 221-243.
3. Rishu Sharma and Suresh Garg. (2012). *Capacity Planning and Performance Measurement for Automobile Service Centre using Simulation*. International Journal of Modeling in Operations Management, Vol 2, No 3, pp 288-308
4. Rishu Sharma and Suresh Garg. (2010). *Interpretive Structural Modeling of Enablers for Improving the Performance of Automobile Service Centre*. International Journal of Service, Operations and Informatics. Vol 5 No 4, pp 351-372.
5. Rishu Sharma and Suresh Garg. *Effect of Demand Variability on Job Shop Performance: A Simulation Study*. International Journal of Mechanical Engineering. Vol 3 no 1, January June 2010, pp 109-116.

***National Journal Publications:***

1. Rishu Sharma and Suresh Garg. Flexibility and Productivity issues in Job shop Production System. *Productivity Promotion: Management Journal of Delhi Productivity Council and DPC Institute of Management*. Vol 11, No 39, July Dec 2009. pp 22-39.

**Ravinder Kumar (Asst. Prof.)**

Area of Research is small and medium enterprises management.

***International Journal Publications:***

1. Paper published in *International Journal of Manufacturing Research* on title “Supply Chain Management in SMEs: A Case Study” Vol.7, No.2, 2012.
2. Paper published in *International Journal of Supply Chain Management Systems* on title “Supply Chain Management issues in an Indian SME: A Sap-Lap Analysis” Vol.1, No.2, 2012.

**Anil Gupta (Asst. Prof.)**

1. Anil Gupta, Hari Singh, Aman Aggarwal (2011), “ Taguchi fuzzy multi output optimization (MOO) in high speed CNC turning of AISI P-20 tool steel” *Expert Systems with Applications* , Vol 38, pp 6822-6828
2. Anil Gupta, T.K.Kundra (2012) , “ A review of designing machine tool for leanness” *Sadhana ( Journal of Indian Academy of Sciences)*, Vol 37 (2) , pp 241-259

**Abhishek Tevatia (Asst. Prof.)**

***International Journal Publications:***

1. “Hybrid Intelligent System for the Modeling of Design Parameters of Connecting Rod”, G.D. Gautam, Abhishek Tevatia, and S.K. Srivastava, *International Journal of Engineering Research and Technology*, ISSN 0974-3154, Vol 5, No. 1, pp. 61-72, 2012.
2. “Modeling of Design Parameters of Connecting Rod using Multiple Computer Aided Techniques”, Abhishek Tevatia, G.D. Gautam, and S.K. Srivastava, *International Journal of Mechanics Structural*, ISSN 0974-312X, Vol. 6, No. 2, pp. 129-138, 2011.
3. “Shape Optimization of Connecting Rod using Strain Life Theory”, Abhishek Tevatia, and S.K. Srivastava, *International Review of Applied Engineering Research*, ISSN 2248-9967, Vol. 1, No. 2, pp. 105-113, 2011.
4. “Fatigue Life Prediction of Connecting Rod using Strain Life Theories”, Abhishek Tevatia, and S.K. Srivastava, *Global Journal of Engineering and Technology*, ISSN 2249-3107, Vol. 1, No. 1, pp. 11-20, 2011.
5. “Finite Element Fatigue Analysis of Connecting Rod of Different Cross-Sections”, Abhishek Tevatia, S.B. Lal, and S.K. Srivastava, *International Journal of Mechanics and Solids*, ISSN 0973-1881, Vol. 6, No. 1, pp. 44-53, 2011.
6. “Fatigue Analysis of Connecting Rod using ANSYS Code”, S.B. Lal, Abhishek Tevatia and S.K. Srivastava, *International Journal of Mechanics and Solids*, ISSN 0973-1881, Vol. 5, No. 2, pp. 143-150, 2010.

**Kanchan Mudgil (Asst. Prof.)**

***International Journal Publications:***

1. Vats, K., Tiwari, G.N. Performance evaluation of a building integrated semitransparent photovoltaic thermal system for roof and facade. *International Journal of Energy and Buildings*, ENB 45 (2012): 211- 218.
2. Vats, K., Tiwari, G.N. Energy and exergy analysis of building integrated semitransparent photovoltaic thermal (BISPVT) system. *International Journal of Applied Energy*, AE 96 (2012) 409- 416.
3. Vats, K., Tiwari, G.N. Effect of packing factor on the performance of a building integrated semitransparent photovoltaic thermal (BISPVT) system with air duct. *International Journal of Energy and Buildings*, ENB 53 (2012) 159-165.

### **Vaibhav Jain (Asst. Prof.)**

Area of Research is Refrigeration.

#### ***International Journal Publications:***

- 1) Published a Paper on "Comparative Performance Study of Vapour Compression Refrigeration System with R22/R134A/R410A/R407C/M20" in *International Journal of Energy and Environment* , Volume 2, issue 2, 2011, pp 297-310.
- 2) Published a Paper on "Thermodynamic Study Of An Industrial Vapour Compression Refrigeration System" in *International Journal "RES Engineeria"* Volume 1, issue 5, 2011, pp . 6-15.

### **Surbhi Upadhyay (Asst. Prof.)**

#### ***International Journal Publication:***

Surbhi and Shahzad Ahmad (2012). *Supply Chain Management for Human Life Betterment: An ISM analysis* *International Journal on Emerging Technologies* 3(1): 149-156(2012), ISSN No. (Print) : 0975-8364

#### ***National Conference***

Paper presented on Flexibility and Productivity Issues in Supply Chain Management in National Conference NCCADT-2012.

### **Sidharth (Asst. Prof.)**

- 1) Published a research paper in *Journal of Biofuels* titled "Evaluation of performance and emission characteristics of thumba oil in a compression ignition engine" Year 2011, Volume-2, Issue-2 (July–Dec.), Article DOI : 10.5958/j.0976-3015.2.2.007
- 2) Presented a paper at 8<sup>th</sup> International Symposium by ISFL on "Performance and emission characteristics of preheated Thumba oil on medium capacity diesel engine", held on 5-7 March 2012, at Indian Habitat Centre, Delhi, India.
- 3) Presented a paper at petrotech-2012 (international conference) titled "Utilisation of ethanol and butanol in compression ignition engine". Held on 14-17 October 2012, at Vigyan Bhawan, Pragati Maidan, Delhi, India.



- 4) Published a research paper in Journal of Biofuels titled “Performance and Emission Studies of a Compression Ignition Engine on blends of Calophyllum Oil and Diesel.” Year 2012, Volume-3, Issue-1 (January–June), Article DOI : 10.5958/j.0976-3015.3.1.005.

**Rakesh Chander Saini (Asst. Prof.):**

**National Conferences**

1. Paper presented on *Design and Development of Front Suspension Shock Mounting Of XYZ Vehicle* in National Conference NCCADT-2012.
2. Paper presented on *Critique of Laser Beam Machining* in National Conference NCCADT-2012.
3. Paper presented on *Simulation And Analysis Of Counter Pressure Hydroforming Process* in National Conference NCCADT-2012.
4. Paper presented on *ISM Analysis Of Factors Affecting Implementation Of Lean Manufacturing* in National Conference NCCADT-2012.
5. Paper presented on *Design and Analysis of composite drive shaft for an automobile* in National Conference RDME-2010.

**Sumit Chaudhary (Asst. Prof.)**

Area of research is non conventional machining, Taguchi Method, production and industrial engineering. Published 2 international papers titled, “ Effect of Machining Variables on Surface Roughness in Wire-EDM of AISI D3” and “Gravity Power Generation”.

**Naveen Solanki Asst. Prof.:**

Area of research in Refrigeration and Air-Conditioning.

**National Conferences**

- 1) Paper presented on *Critique of Laser Beam Machining* in National Conference NCCADT-2012.
- 2) Paper presented on *Simulation And Analysis Of Counter Pressure Hydroforming Process* in National Conference NCCADT-2012.

**Harsh Joshi (Asst. Prof.)**

Area of Research is Optimization of Process Parameters of Machining of Adapter MT6 Component.

**Mr. V.N. Mathur**, Assistant Professor, MAE Department

Doing research in the area of **Heat Transfer characteristics of array of impinging plane jets on plates.**

**Applied Science**

1. All faculty members of the Chemistry Department are actively involved in the research work, Dr. Kusum Sharma Professor, Chemistry Department is supervising two Ph.D students. The area of research is **preparation and study on selective electrodes.**

2. Dr. Puja Singh, Assoc. Professor, Chemistry Department is working **in the field of corrosion Chemistry.**
3. Dr. Shivani Aggarwal, Assist. Prof., Chemistry Department is working in the **field of Environment Chemistry and Industrial method of Chemical analysis.**
4. Dr. Namita K. Johar, Assist. Prof., in Chemistry Department has worked on **corrosion Inhibitor** and writing a book for B.Sc Ist year.
5. Ms. Arti Kaushik, Assist. Prof., in Mathematics is pursuing Ph.D from IGNOU. The topic of her research is “ **Some problems in fluid dynamics and stability problems in bubble dynamics**”. She has published four research paper.
6. Dr. Ritu Arora , Assist. Prof., in Mathematics doing research in Operational research.

## Annexure V

### LIST OF FACULTY

| S. No. | Name of the Faculty | Date of Birth | Present Designation  | Pay Scale   | Total Emoluments | % /Division                      | Experience in years | Status of Approval /Recognition by University |            |             |
|--------|---------------------|---------------|----------------------|-------------|------------------|----------------------------------|---------------------|---|------------|-------------|
|        |                     |               |                      |             |                  |                                  |                     | Date  | Discipline | Designation |
| 1      | Prof. M.L. Goyal    | 24.11.1948    | Director & Prof.     | 22400-24500 | 2,22,813         | 1 <sup>st</sup> with Distinction | 40                  | 17.11.2011                                    | CSE        | Director    |
| 2      | Prof. B.N. Mishra   | 11.05.1936    | Director (E) & Prof. | Consolidate | 63100            | 1 <sup>st</sup>                  | 50                  |   |            |             |
| 3      | Mr. S.K.Kakar       | 27.10.1948    | TPO& Prof.           | Consolidate | 75000            | 1 <sup>st</sup>                  | 35                  |   |            |             |

### DEPARTMENT OF MECHANICAL AND AUTOMATION ENGINEERING

| S. No. | Name of the Director/ Principal/ Faculty | Date of Birth | Present Designation      | Pay Scale                                       | Total Emoluments | Percentage/ Division (Last Exam) | Experience in Years     | Status of Approval/Recognition by University in case of Principal/Director/Faculty |            |                     |
|--------|--|---------------|--------------------------|---|------------------|----------------------------------|-------------------------|--|------------|---------------------|
|        |  |               |                          |   |                  |                                  |                         | Date   | Discipline | Designation         |
| 1      | Dr. O.P.Grover                           | 18/07/1933    | Adj.Prof. & Dean         | Consolidated                                    | 633356           | 1 <sup>st</sup>                  | 53 Years                |  | MAE        |                     |
| 2      | Dr. YVSR.Sastry                          | 15/01/1936    | Adj.Professor            | Consolidated                                    | 50542            | 1 <sup>st</sup>                  | 53 years                |  | MAE        |                     |
| 3      | Dr. V.K Jain                             | 3/3/1955      | Professor                | Basic-16,400/-                                  | 1.14,569/-       | 1 <sup>st</sup> with Distinction | 37 Years                |  | MAE        |                     |
| 4      | Dr. Manoj Soni                           | 16/01/1971    | Associate Professor      | Basic 37,400 + 9000 GP                          | 86,176/-         | 1 <sup>st</sup>                  | 18.5 Years              | 16/2/2004  | MAE        | HOH - MAE           |
| 5      | Dr. K.L.Arora                            | 1/6/1943      | Professor                | consolidated                                    | 50,275/-         | 1 <sup>st</sup> with Distinction | Above 42 6 months Years |  | MAE        |                     |
| 6      | Mr. V.N.Mathur                           | 19/07/1973    | Asst Professor           | 12000-18300                                     | On Study Leave   | 1 <sup>st</sup>                  | 12 Years 6months        | 9/1/2002   | MAE        | Assistant Professor |
| 7      | Mr. Gurmeet Soin                         | 13/12/1947    | Dean & Prof. (Extn.Ser.) | consolidated                                    | 70,000/-         | 1 <sup>st</sup>                  | 39 Years                |  | MAE        |                     |
| 8      | Mr. Anil Gupta                           | 1/8/1971      | Asst Professor           | (15600/- to 39,100) (Basic: 23,890/-) + 8000 GP | 69,922/-         | 1 <sup>st</sup>                  | 17.5 Years              | 9/1/2002   | MAE        | Assistant Professor |
| 9      | Mr. Subhash Tikoo                        | 28/07/1954    | Asst Professor           | consolidated                                    | 50,000/-         | 1 <sup>st</sup>                  | 37 Years                |  | MAE        |                     |
| 10     | Mr. Ravinder Kumar                       | 4/12/1978     | Assistant Professor      | (15600/- to 39,100) (Basic: 21240/-) + 7000     | 62,348/-         | 1 <sup>st</sup> with Honors      | 11.5 Years              | 12/2/2004  | MAE        | Assistant Professor |

|     |                       |            |                     |                              |          |                             |                  |  |     |                     |
|-----|-----------------------|------------|---------------------|------------------------------|----------|-----------------------------|------------------|--|-----|---------------------|
|     |                       |            |                     | GP                           |          |                             |                  |  |     |                     |
| 11  | Ms. Piu Jain          | 6/10/1972  | Assistant Professor | Basic: 16570/- + GP: 6000/-  | 51,095/- | 1 <sup>st</sup>             | 14 Years         |  | MAE | Lecturer            |
| 12  | Ms. Garima Sharma     | 9/9/1983   | Assistant Professor | Basic: 17,090/- GP: 6000/-   | 52,146/- | 1 <sup>st</sup> with Honors | 7.5 Years        |  | MAE |                     |
| 13  | Mr. Deshdeep Gumbheer | 13/6/1974  | Assistant professor | Basic- 17,620/- + 6000 GP    | 53,000/- | 1 <sup>st</sup>             | 9 years          |  | MAE |                     |
| 14  | Ms. Surbhi Lata       | 8/7/1987   | Lecturer            | consolidated                 | 27,000/- | 1 <sup>st</sup>             | 2.5 yrs          |  | MAE |                     |
| 15  | Mr. Naveen Solanki    | 17/09/1984 | Assistant Professor | Basic : 8000/-               | 34,820/- | 1 <sup>st</sup>             | 5 years          |  | MAE |                     |
| 16  | Mr. Vaibhav Jain      | 30/7/1982  | Assistant Professor | Basic – 19370/- Gp: 7000/-   | 57,891/- | 1 <sup>st</sup>             | 9 Years 6 Months |  | MAE |                     |
| 17  | Ramakant Rana         | 02/02/1989 | Lecturer            | consolidated                 | 27,000/- | 1 <sup>st</sup>             | 2.3 yrs          |  | MAE |                     |
| 18  | Anil Kumar Dahiya     | 21/11/1973 | Assistant Professor | Basic 21,630/- + 7000/- GP   | 63,300/- | 1 <sup>st</sup>             | 15 Years         |  | MAE |                     |
| 19  | Harsh Joshi           | 21/8/1969  | Assistant Professor | Basic 8,275/- + 7500/- adhoc | 43,481/- | 1 <sup>st</sup>             | 7.5 Years        |  | MAE |                     |
| 20. | Piyush Pant           | 23/3/1989  | LECTURER            | consolidated                 | 25,000/- | 1 <sup>st</sup>             | 2 yrs 2 Months   |  | MAE |                     |
| 21. | Rakesh Chander Saini  | 22/2/1984  | Assistant Professor | Basic 16,250/- + 6000/- GP   | 50,449/- | 1 <sup>st</sup>             | 6.2 Years        |  | MAE | Assistant Professor |
| 22. | Dr Rishu Sharma       | 14-03-1980 | Assistant Professor | Basic 20,590/- + 6000/- GP   | 62,000/- | 1 <sup>st</sup>             | 8 yrs            |  | MAE |                     |
| 23. | Sidharth              | 21-7-1986  | Assistant Professor | Consolidated                 | 32,000/- | 1 <sup>st</sup>             | 2 yrs            |  | MAE |                     |
| 24  | Sumit Chaudhary       | 02-09-1987 | Assistant Professor | Consolidated                 | 32,000/- | 1 <sup>st</sup>             | 6 months         |  | MAE |                     |
| 25. | Vipin Kumar Sharma    | 09-02-1987 | Assistant Professor | Consolidated                 | 37,000/- | 1 <sup>st</sup>             | 1.5 yrs          |  | MAE |                     |
| 26  | Atul Kumar Kaushik    | 05-08-1984 | Assistant Professor | Consolidated                 | 35,000/- | 1 <sup>st</sup>             | 3.5 yrs          |  | MAE |                     |
| 27  | Vikas Sharma          | 23-06-1985 | Assistant Professor | Basic 8000/-                 | 34,820/- | 1 <sup>st</sup>             | 1.5 yrs          |  | MAE |                     |
| 28  | Abhishek Tevatia      | 15-01-1985 | Assistant Professor | Basic 8000/-                 | 34,820/- | 1 <sup>st</sup>             | 4.5 yrs          |  | MAE |                     |
| 29  | Alok Kumar            | 03-12-1987 | Assistant Professor | Consolidated                 | 40,000/- | 1 <sup>st</sup>             | 3.5 yrs          |  | MAE |                     |
| 30  | Shruti Arora          | 24-01-1988 | Assistant Professor | consolidated                 | 35,000/- | 1 <sup>st</sup>             | 1 year           |  | MAE |                     |

|    |                 |            |                     |   |          |                 |         |  |     |  |
|----|-----------------|------------|---------------------|---|----------|-----------------|---------|--|-----|--|
| 31 | Kanchan Mudgil  | 30-09-1980 | Assistant professor | Basic – 19370/-<br>Gp: 7000/-             | 57,891/- | 1 <sup>st</sup> | 8 yrs   |  | MAE |  |
| 32 | Surbhi Upadhyay | 15-09-1980 | Assistant Professor | Basic – 8000/-                            | 34,820/- | 1 <sup>st</sup> | 8.5 yrs |  | MAE |  |
| 33 | Ashwani         | 02-03-1987 | Assistant Professor | Basic 8000/- 5 <sup>th</sup><br>pay scale | 43,480/- | 1 <sup>st</sup> | 1.5 yrs |  | MAE |  |
| 34 | Dinesh Kochar   | 08-10-1984 | Assistant Professor | Consolidated                              | 37,000/- | 1 <sup>st</sup> | 1.2 yrs |  | MAE |  |
| 35 | Rachna Chawla   | 25-11-1987 | Lecturer            | consolidated                              | 28,000/- | 1 <sup>st</sup> | 3 yrs   |  | MAE |  |
| 36 | Ms. Harsha Goel | 21/09/1979 | Assistant Professor | 8000-13500                                | 38131    | 1 <sup>st</sup> | 5 Years |  | MAE |  |
| 37 | Vikas Acharya   | 04/06/1975 | Assistant Professor | Basic – 19200/-<br>Gp: 7000/-             | 56390/-  | 1 <sup>st</sup> | 3 yrs   |  | MAE |  |

**DEPARTMENT OF ELECTRICAL AND ELECTRONICS ENGINEERING**

| S.No. | Name of the Faculty           | Date of Birth | Present Designation        | Pay Scale   | Total Emoluments | % /Division     | Experience in years     | Status of Approval /Recognition by University |            |             |
|-------|-------------------------------|---------------|----------------------------|-------------|------------------|-----------------|-------------------------|---|------------|-------------|
|       |                               |               |                            |             |                  |                 |                         | Date  | Discipline | Designation |
| 1     | Rajveer Mittal                | 08/07/1962    | HOD and Assoc. Prof.       | 37400-67000 | 82360            | 1 <sup>st</sup> | 10 (Teach)<br>10 (Ind.) | 2005  | EEE        | Lecturer    |
| 2     | Prof.G.K.Jindal               | 18/07/1949    | Professor                  | 16400-22400 | 97877            | 1 <sup>st</sup> | 42                      |   |            |             |
| 3     | U. K. Jha                     | 26/12/1969    | Assoc. Prof.               | 37400-67000 | 79360            | 1 <sup>st</sup> | 15                      | 2001  | EEE        | Lecturer    |
| 4     | S.S. Deswal                   | 11/12/1974    | Assoc. Dean & Assoc. Prof. | 37400-67000 | 82928            | 1 <sup>st</sup> | 13 Teach.               |   | EEE        | Lecturer    |
| 5     | L. P. Singh                   | 05/07/1974    | Asst. Prof.                | 15600-39100 | 67466            | 1 <sup>st</sup> | 12 yrs                  | Feb. 2002                                     | Elect.     | Lecturer    |
| 6     | Ramesh Singh (On leave)       | 05.07.1978    | Asst. Prof.                | 15600-39100 | 58346            | 1 <sup>st</sup> | 10.5 Teach.             |   |            |             |
| 7     | Ms. Monika Gupta              | 27/03/1972    | Asst. Prof.                | 15600-39100 | 58749            | 1 <sup>st</sup> | 8 Teach.<br>4 Indl      | July 2005                                     | Elect.     | Lecturer    |
| 8     | Lovely Goel                   | 20/04/1979    | Asst. Prof.                | 15600-39100 | 58749            | 1 <sup>st</sup> | 8.5 Teach.              | 01 July 05                                    | Elect.     | Lecturer    |
| 9     | Neelu Nagpal                  | 09/11/1970    | Asst. Prof.                | 15600-39100 | 58749            | 1 <sup>st</sup> | 10 Teach.               |   | Elect.     | Lecturer    |
| 10    | Sunil Kumar Pandey            | 01/01/1978    | Asst. Prof.                | 15600-39100 | 57560            | 1 <sup>st</sup> | 7 teach.<br>5 Indl      | 01 .08.<br>2006                               | EEE        | Lecturer    |
| 11    | Neelam Kesarwani              | 30/05/1965    | Asst. Prof.                | 15600-39100 | 57560            | 1 <sup>st</sup> | 8 Teach.<br>8 5 Indl    | -   | EEE-       | Lecturer    |
| 12    | Ashok Kumar Goyal             | 21.08.1974    | Asst. Prof.                | 15600-39100 | 60348            | 1 <sup>st</sup> | 8 Teach. 5<br>Indl      |   | EEE        | Lecturer    |
| 13    | Anjali Kalra                  | 25.05.1981    | Asst. Prof.                | 15600-39100 | 49994            | 1 <sup>st</sup> | 6 years                 |   | EEE        | Lecturer    |
| 14    | Supriya Sharma                | 23.02.1987    | Lecturer                   | Consolidate | 28000            | 1 <sup>st</sup> | 3 years                 |   |            |             |
| 15    | Sheersh Kr. Garg              | 01.01.1985    | Asst. Prof.                | 8000-13500  | 41991            | 1 <sup>st</sup> | 2.5 years               |   |            |             |
| 16    | Poonam Juneja                 | 01.03.1980    | Asst. Prof.                | 8000-13500  | 41990            | 1 <sup>st</sup> | 4 years                 |   |            |             |
| 17    | Jitender Kumar                | 6.7.1984      | Asst. Prof.                | 15600-39100 | 48005            | 1 <sup>st</sup> | 4 years                 |   |            |             |
| 18    | Shashibala Agarwal (On Leave) | 16.07.1984    | Asst. Prof.                | 8000-13500  | 30000            | 1 <sup>st</sup> | 4 years                 |   |            |             |
| 19    | Mr. Anirudh Dube              | 12/12/1988    | Asstt. Professor           | Consolidate | 35000            | 1 <sup>st</sup> | 0.5                     |   |            |             |
| 20    | Ms. Ruchika                   | 4/6/1990      | Technical Officer          | Consolidate | 15200            | 1 <sup>st</sup> | 0.5                     |   |            |             |
| 21    | Neha Goyal                    | 1/1/1987      | Asst. Prof.                | Consolidate | 32000            | 1 <sup>st</sup> | 0.9                     |   |            |             |
| 22    | Vandana Jain                  | 1/10/1988     | Asst. Prof.                | Consolidate | 32000            | 1 <sup>st</sup> | 0.5                     |   |            |             |

**DEPARTMENT OF INFORMATION AND TECHNOLOGY ENGINEERING**

| S. No | Name of the Faculty   | Date of Birth | Present Designation      | Pay Scale    | Total Emoluments | % / Division    | Experience in years | Status of Approval /Recognition by University |            |             |
|-------|-----------------------|---------------|--------------------------|--------------|------------------|-----------------|---------------------|---|------------|-------------|
|       |                       |               |                          |              |                  |                 |                     | Date  | Discipline | Designation |
| 1.    | Prof. D Roy Choudhury | 5/1/1946      | Professor                | Consolidate  | 100000           | 1 <sup>st</sup> | 42                  |   |            |             |
| 2     | Dr. M.L.Sharma        | 20/07/1971    | Associate. Prof. (H.O.D) | 37400-67000  | 82928            | Ist Div.        | 22                  | -   | -          | -           |
| 3     | Mrs. Amita Goel       | 01/07/75      | Associate. Prof.         | 37400-67000  | 77360            | 83.03           | 16                  | August 2003                                   | CSE        | Lecturer    |
| 4     | Mrs. Bhoomi Gupta     | 11/11/78      | Asstt. Prof              | 21860        | 60348            | 86.6            | 9+                  | October 2002                                  | CSE        | Lecturer    |
| 5     | Mrs Shallu Bashambhu  | 12/03/76      | Asstt. Prof.             | 20420        | 58749            | 75.08           | 12.5                | August 2006                                   | CSE        | Lecturer    |
| 6     | Mr. Ajay Kaushik      | 17/07/80      | Asstt. Prof              | 39100        | 57560            | 76              | 6                   | June 2005                                     | CSE        | Lecturer    |
| 7     | Ms. Nidhi Sengar      | 07/04/1981    | Asstt. Prof.             | 20420        | 57560            | 79              | 9.6                 | June 2005                                     | CSE        | Lecturer    |
| 8     | Ms. Neelam Sharma     | 22/09/82      | Asstt. Prof.             | 19210        | 56390            | 77              | 6.5                 | March 2006                                    |            | Lecturer    |
| 9     | Mr. Vinay Saini       | 09/01/82      | Asstt. Prof              | 20700        | 59295            | 71              | 9.5                 | 12 Sep, 2006                                  | CSE        | Lecturer    |
| 10    | Ms. Shilpa Sethi      | 27/03/84      | Asstt. Prof              | 8550         | 50988            | 74              | 6.5                 |   | -          |             |
| 11    | Mr. Bhaskar Kapoor    | 03/07/81      | Assistant Poferssor      | 19210        | 56390            | 72.67           | 9                   | -   | -          | -           |
| 12    | Ms. Meenu Garg        | 16/05/85      | Assistant Poferssor      | 16420        | 48999            | 75              | 6                   | -   | -          | -           |
| 13    | Ms. Narinder Kaur     | 26/11/79      | Asstt. Prof.             | 19210        | 56390            | 76              | 10.5                |   | -          |             |
| 14    | Ms. Vasudha Bahl      | 30/09/82      | Asstt. Prof.             | 19210        | 56390            | 77.7%           | 9                   |   | -          |             |
| 15    | Mr. Pankaj Garg       | 29/12/1985    | Asstt. Prof.             | 8550         | 44210            | 75%             | 2+                  | August 2010                                   | IT         | Lecturer    |
| 16    | Mrs. Neha Agrawal     | 14/09/1983    | Assistant Poferssor      | 19210        | 58390            | 72%             | 7+                  | 25 July 2011                                  | IT         | Lecturer    |
| 17    | Mr. Vibhor Sharma     | 08/11/1986    | Assistant Poferssor      | 8275         | 43000            | 77%             | 2+                  | 25 Aug 2011                                   | IT         | Lecturer    |
| 18    | Ms Seema Kalonia      | 25/12/1984    | Assistant Poferssor      | 8275         | 43000            | 8.25(cgpa)      | 3                   | 25 July 2011                                  | CSE        | Lecturer    |
| 19    | Ms Deepa Dhingra      | 11/07/1987    | Assistant Professor      | 8275         | 43000            | 8.9 (cgpa)      | 1+1.5               | 25 July 2011                                  | CSE        | Lecturer    |
| 20    | Ms Namita Goel        | 11/09/1986    | Assistant Professor      | consolidated | 32000            | 8.4(cgpa)       | 6 months            | 23 july 2012                                  | CSE        | Lecturer    |
| 21    | Ms Shikha Jain        | 02/04/1987    | Assistant Professor      | consolidated | 32000            | 81%             | 6 months            | 13 august 2012                                | CSE        | Lecturer    |
| 22    | Mr Nitesh             | 11-01-1987    | Assistant Professor      | consolidated | 40000            | 82.7%           | 2.5+                | 23 july 2012                                  | IT         | Lecturer    |
| 23    | Ms Shreya Arora       | 03/11/1988    | Assistant Professor      | consolidated | 32000            | 8.75(cgpa)      | 6 months            | 23 july 2012                                  | IT         | Lecturer    |
| 24    | Ms Vandana Choudhary  | 24-03-1988    | Assistant Professor      | consolidated | 32000            | 85.3 %          | 6 months            | 23 july 2012                                  | IT         | Lecturer    |
| 25    | Ms Jaya Gupta         | 08-05-1988    | Assistant Professor      | consolidated | 33000            | 85.3 %          | 2 years             |   | IT         | Lecturer    |

**DEPARTMENT OF ELECTRONICS AND COMMUNICATION ENGINEERING**

| S. No | Name of the Faculty      | Date of Birth | Present Designation | Pay Scale   | Total Emoluments | % / Division | Experience in years | Status of Approval /Recognition by University |            |             |
|-------|--------------------------|---------------|---------------------|-------------|------------------|--------------|---------------------|---|------------|-------------|
|       |                          |               |                     |             |                  |              |                     | Date  | Discipline | Designation |
| 1.    | Prof. R S Gupta          | 10.1.1943     | Professor           | Consolidate | 85000/           | Ist          | 42                  |   |            |             |
| 2     | Sh. Ajay Kumar Garg      | 02.01.1968    | Assoc. Professor    | 37400-67000 | 77360            | Ist          | 14                  | 09.01.2002                                    | ECE        | Lecturer    |
| 3     | Mukund G. Mohod          | 03.04.1948    | Asstt. Professor    | Consolidate | 45000/           | Ist          | 37                  |   |            |             |
| 4     | Sh. Ganga Prasad Pandey, | 13.01.1978    | Asstt. Professor    | 15600-39100 | 61109            | Ist          | 9                   | 29.11.2005                                    | ECE        | Lecturer    |
| 5     | Mr. Sunil Kumar          | 10.03.1970    | Assoc. Professor    | 37400-67000 | 77360            | Ist          | 19                  | 13.01.2006                                    | ECE        | Lecturer    |
| 6     | Sh. Praveen Kumar        | 15.10.1973    | Asstt. Professor    | 15600-39100 | 61109            | Ist          | 11                  | 08.04.2003                                    | ECE        | Lecturer    |
| 7     | Sh. Binay Kr. Singh      | 05.03.1972    | Asstt. Professor    | 15600-39100 | 61109            | Ist          | 9                   | 08.04.2003                                    | ECE        | Lecturer    |
| 8     | Mr. Navneet Yadav        | 26.02.1973    | Asstt. Professor    | 15600-39100 | 59919            | Ist          | 12                  |   |            |             |
| 9     | Dhirendra Kumar          | 17.12.1969    | Asstt. Professor    | 15600-39100 | 67446            | Ist          | 14                  |   |            |             |
| 10    | Sh. Ramakanta Choudhry   | 15.05.1969    | Asstt. Professor    | 15600-39100 | 62279            | Ist          | 15                  | 09.01.2002                                    | ECE        | Lecturer    |
| 11    | Sh. Kanhaiya Lal Pushkar | 17.08.1969    | Asstt. Professor    | 15600-39100 | 59929            | Ist          | 13.5                | ---02-2001                                    | ECE        | Lecturer    |
| 12    | Ms. Abhilasha Gokhale    | 15.07.1968    | Asstt. Professor    | 15600-39100 | 60348            | Ist          | 12.5                | 09.01.2002                                    | ECE        | Lecturer    |
| 13    | Sh. Javed Ahmad          | 11.12.1980    | Asstt. Professor    | 15600-39100 | 61109            | Ist          | 10.5                | 08.04.2003                                    | ECE        | Lecturer    |
| 14    | Ms. Divya Goel           | 23.09.1984    | Asstt. Professor    | 15600-39100 | 51,234           | Ist          | 6                   |   |            |             |
| 15    | Ms. Bhawna Aggarwal      | 31.10.1980    | Asstt. Professor    | 15600-39100 | 58749            | Ist          | 9.5                 | 13.01.2006                                    | ECE        | Lecturer    |
| 16    | Ms. Anubha Goel          | 15.05.1984    | Asstt. Professor    | 15600-39100 | 51983            | Ist          | 2.5                 |   |            |             |
| 17    | Sh. Himanshu Khanna      | 27.09.1978    | Asstt. Professor    | 15600-39100 | 58749            | Ist          | 8.5                 | 13.01.2006                                    | ECE        | Lecturer    |
| 18    | Sh. Praveen Kumar (C)    | 22.02.1980    | Asstt. Professor    | 15600-39100 | 56390            | Ist          | 6                   |   |            |             |
| 19    | Sh. Amit Saxena          | 01.06.1981    | Asstt. Professor    | 15600-39100 | 56390            | Ist          | 6                   | 30.08.2006                                    | ECE        | Lecturer    |
| 20    | Ajay Kumar Gupta         | 10.7.1983     | Asstt. Professor    | 15600-39100 | 50988            | 1st          | 3                   |   | ECE        |             |
| 21    | Ms. Preeti Goyal         | 13.05.1985    | Asstt. Professor    | 15600-39100 | 53387            | Ist          | 4.5                 | -   | ECE        |             |
| 22    | Sh. Nitin Sharma         | 21.04.1982    | Asstt. Professor    | 15600-39100 | 51983            | Ist          | 4.5                 | -   | -ECE       | -           |
| 23    | Sh. Umesh Chandra Singh  | 15.01.1978    | Asstt. Professor    | 15600-39100 | 49994            | Ist          | 4.5                 |   | ECE        |             |
| 24    | Ms. Sapna Gupta          | 03.06.1980    | Asstt. Professor    | 15600-39100 | 51983            | Ist          | 4                   | -   | -          | -           |



|    |                     |            |                  |             |       |     |     |   |     |          |
|----|---------------------|------------|------------------|-------------|-------|-----|-----|---|-----|----------|
| 25 | Awadesh Kumar Singh | 25.07.1959 | Asstt. Professor | 15600-39100 | 52997 | Ist | 25  | - | -   | -        |
| 26 | Chanderpal Sharma   | 02.04.1986 | Asstt. Professor | 8000-13500  | 30500 | Ist |     |   |     |          |
| 27 | Alphna Sahu         | 04.12.81   | Asstt. Professor | 8000-13500  | 44699 | Ist | 7   |   | ECE | Lecturer |
| 28 | Vatsala Khanna      | 05.01.1984 | Asstt. Professor | 8000-13500  | 30500 | Ist | 3.5 |   | ECE |          |
| 29 | Swati Sharmaa       | 12.12.1986 | Asstt. Prof.     | 8000-13500  | 33380 | Ist |     |   | ECE |          |
| 30 | Rajni               | 11.12.1986 | Asstt. Prof.     | Consolidate | 27000 | Ist |     |   | ECE |          |
| 31 | Sonia Jain          | 16.3.1984  | Asstt. Prof.     | 8000-13500  | 33380 | Ist |     |   | ECE |          |
| 32 | Stuti               | 15.8.1988  | Asst. Prof       | Consolidate | 30000 | Ist |     |   | ECE |          |
| 33 | Sonam Rewari        | 20.10.1987 | Asst. Prof.      | 8000-13500  | 30000 | Ist |     |   | ECE |          |
| 34 | Priyank Saxena      | 1.7.1988   | Asst. Prof.      | Consolidate | 30000 | Ist |     |   | ECE |          |
| 35 | Nitish Uppal        | 11.6.1987  | Asst. Prof.      | 8000-13500  | 40000 | Ist |     |   | ECE |          |
| 36 | Rohit Lakhani       | 25.6.1987  | Asst. Prof.      | Consolidate | 30000 | Ist |     |   | ECE |          |
| 37 | S.K Kundu           | 9.10.1966  | Asst. Prof.      | 15600-39100 | 54128 | Ist |     |   | ECE |          |
| 38 | Manoj Kumar         | 02.12.1986 | Lecturer         | Consolidate | 20000 | Ist | 1   |   | ECE |          |
| 39 | Mr. Neeraj Kumar    | 6.01.1986  | Lecturer(T.A)    | Consolidate | 15200 | Ist |     |   | ECE |          |

**DEPARTMENT OF COMPUTER SCIENCE ENGINEERING**

| S. No. | Name of the Director/ Principal/ Faculty | Date of Birth     | Present Designation   | Pay Scale          | Total Emoluments (including all admissible allowances) | Percentage/ Division (Last Exam) | Experience in Years | Status of Approval/Recognition by University in case of Principal/Director/Faculty |            |             |
|--------|--|-------------------|-----------------------|--------------------|--|----------------------------------|---------------------|--|------------|-------------|
|        |  |                   |                       |                    |  |                                  |                     | Date   | Discipline | Designation |
| 1      | Dr. Namita Gupta                         | 11-08-1974        | Head-Assoc. Prof.     | 37400-67000        | 82928  | 1 <sup>st</sup>                  | 12                  |  |            |             |
| 2      | Neeraj Garg                              | 25-02-1972        | Assoc. Professor      | 37400-67000        | 78360  | 1 <sup>st</sup>                  | 16                  | May,2001   | CSE        | Lecturer    |
| 3      | Rekha Singla                             | 21-09-1966        | Assoc. Prof.          | 37400-67000        | 77360  | 1 <sup>st</sup>                  | 21                  | Feb.2004   | CSE        | Lecturer    |
| 4      | Sudha Narang                             | 26-02-1981        | Asst. Prof.           | 15600-39100        | 57560  | 1 <sup>st</sup>                  | 9                   | Jan,2006   | CSE        | Lecturer    |
| 5      | Deepika Kukreja                          | 18-06-1979        | Asst. Prof.           | 15600-39100        | 57560  | 1 <sup>st</sup>                  | 10                  | July2005   | CSE        | Lecturer    |
| 6      | Ashish Sharma                            | 24-07-1980        | Asst. Prof.           | 15600-39100        | 57560  | 1 <sup>st</sup>                  | 7                   | Aug,2006   | CSE        | Lecturer    |
| 7      | <b>Garima Gupta</b>                      | <b>28-10-1980</b> | <b>Asst. Prof.</b>    | <b>15600-39100</b> | <b>57560</b>   | 1 <sup>st</sup>                  | 7                   | Aug,2004   | CSE        | Lecturer    |
| 8      | Pooja Gupta(Study Leave)                 | 30-11-1978        | Asst. Prof.           | 15600-39100        | (Study Leave)  | 1 <sup>st</sup>                  | 7                   |  |            |             |
| 9      | Alok Kr. Sharma                          | 01-12-1973        | Lecturer & Syst. Adm. | 15600-39100        | 53387  | 1 <sup>st</sup>                  | 11                  |  |            |             |
| 10     | Deepak Sharma(Study Leave)               | 13-09-1982        | Asst. Prof.           | 15600-39100        | (Study Leave)  | 1 <sup>st</sup>                  | 7                   |  |            |             |
| 11     | Ajay Tiwari                              | 30-07-1980        | Asst. Prof.           | 15600-39100        | 52353  | 1 <sup>st</sup>                  | 7                   |  |            |             |
| 12     | Kavita Sharma                            | 13-09-1982        | Asst. Prof.           | 15600-39100        | 46991  | 1 <sup>st</sup>                  | 7                   |  |            |             |
| 13     | Savita Sharma                            | 24-06-1981        | Asst. Prof.           | 15600-39100        | 53387  | 1 <sup>st</sup>                  | 7                   |  |            |             |
| 14     | Ruchi Goel                               | 06-03-1982        | Asst. Prof.           | 15600-39100        | 51339  | 1 <sup>st</sup>                  | 7                   |  |            |             |
| 15     | Neetu Gupta                              | 10-11-1980        | Asst. Prof.           | 15600-39100        | 51339  | 1 <sup>st</sup>                  | 7                   |  |            |             |
| 16     | Yogesh Sharma                            | 27-12-1981        | Asst. Prof.           | 15600-39100        | 51339  | 1 <sup>st</sup>                  | 5                   |  |            |             |
| 17     | Rajneesh Kr. Kashyap                     | 05-04-1981        | Asst. Prof.           | 15600-39100        | 49994  | 1 <sup>st</sup>                  | 9                   | Aug,2007   | CSE        | Lecturer    |
| 18     | Saurabh Rastogi                          | 26-12-1981        | Asst. Prof.           | 15600-39100        | 53387  | 1 <sup>st</sup>                  | 6.5                 | Aug,2008   | CSE        | Lecturer    |
| 19     | Anupam Kumar                             | 19-12-1985        | Asst. Prof.           | 15600-39100        | 49994  | 1 <sup>st</sup>                  | 3                   |  |            |             |
| 20     | Zameer Fatima                            | 18-05-1983        | Asst. Prof.           | 15600-39100        | 49994  | 1 <sup>st</sup>                  | 5                   |  |            |             |
| 21     | Farzil Kidwai                            | 20-11-1983        | Asst. Prof.           | 8000-13500         | 44210  | 1 <sup>st</sup>                  |                     |  |            |             |
| 22     | Deepak Gupta                             | 20-11-1983        | Asst. Prof.           | 8000-13500         | 44210  | 1 <sup>st</sup>                  | 4.5                 |  |            |             |
| 23     | Shubra Goyal                             | 06-07-1987        | Asst. Prof.           | 8000-13500         | 33380  | 1 <sup>st</sup>                  | 1                   |  |            |             |
| 24     | Sandeep Tayal                            | 03-08-1985        | Asst. Prof.           | 8000-13500         | 30500  | 1 <sup>st</sup>                  | 1                   |  |            |             |
| 25     | Deepti Gupta                             | 29-06-1982        | Asst. Prof.           | 15600-39100        | 50083  | 1 <sup>st</sup>                  | 7                   |  |            |             |
| 26     | Ashish Khanna                            | 25-10-1978        | Asst. Prof.           | 15600-39100        | 58749  | 1 <sup>st</sup>                  | 7                   | Aug,2005   | CSE        | Lecturer    |
| 27     | Karuna Dara                              | 30-09-1983        | Asst. Prof.           | 8000-13500         | 35599  | 1 <sup>st</sup>                  | 5.5                 |  |            |             |
| 28     | Mool Chand Sharma                        | 12-05-1988        | Asst. Prof.           | Consolidated       | 32000  | 1 <sup>st</sup>                  | 0.5                 |  |            |             |
| 29     | Upasana Bhardwaj                         | 06-02-1988        | Asst. Prof.           | Consolidated       | 30000  | 1 <sup>st</sup>                  | 0.5                 |  |            |             |
| 30     | Divya Nasa                               | 05-07-1988        | Asst. Prof.           | Consolidated       | 30000  | 1 <sup>st</sup>                  | 0.5                 |  |            |             |
| 31     | Shallu Juneja                            | 21-01-1987        | Asst. Prof.           | Consolidated       | 32000  | 1 <sup>st</sup>                  | 0.5                 |  |            |             |
| 32     | Anurag Singh(Study Leave)                | 25-03-1978        | Asst. Prof.           | 15600-39100        | (Study Leave)  | 1 <sup>st</sup>                  | 10                  |  |            |             |
| 33     | Prerna Sharma (Study Leave)              | 26-09-1987        | Asst. Prof.           | 15600-39100        | (Study Leave)  | 1 <sup>st</sup>                  | 0.5                 |  |            |             |

**DEPARTMENT OF MBA**

| S. No. | Name of the Director/<br>Principal/<br>Faculty | Date<br>of<br>Birth | Present<br>Designation | Pay Scale    | Total<br>Emoluments<br>(including<br>all<br>admissible<br>allowances) | Percentage/ Division<br>(Last Exam)     | Experience in<br>Years                 | Status of<br>Approval/Recognition by<br>University in case of<br>Principal/Director/Faculty |                |                 |
|--------|--|---------------------|------------------------|--------------|---|---|--|---|----------------|-----------------|
|        |  |                     |                        |              |   |   |  | Date  | Disci<br>pline | Designat<br>ion |
| 1.     | Prof.Ravinder jit                              | 13.12.1963          | Professor              | 16400-22400  | 87594   | M.A, M.Phil, PhD-63%                    | 34                                     |   |                |                 |
| 2      | Mr.Nitin Walia                                 | 11.10.1968          | Asstt.Professor        | 15600-39100  | 52272   | MBA-57%                                 | 20                                     |   |                |                 |
| 3      | Mrs.Sunita Tank                                | 09.10.1979          | Asstt.Professor        | 15600-39100  | 53675   | MBA, MDBA,<br>B.COM-Ist Div             | 11                                     |   |                |                 |
| 4      | Mr.Sanjeev Kumar                               | 10.05.1973          | Asstt.Professor        | 15600-39100  | 42983   | M.Sc, MCA, M.Phil-75%                   | 10                                     |   |                |                 |
| 5      | Ms.Meenakshi Gupta                             | 25.09.1984          | Asstt.Professor        | 15600-39100  | 44138   | B.tech(IT)-ist Div                      | 2.6                                    |   |                |                 |
| 6      | Ms.Smita Tejwani                               | 05.07.1982          | Asstt.Professor        | 15600-39100  | 45105   | MA(Eco), M.Phil-66%                     | 3                                      |   |                |                 |
| 7      | Mrs.Anju Bharti                                | 07.11.1970          | Asstt.Professor        | 15600-39100  | 43928   | B.Sc, M.Sc,<br>PGDMM, M.Phil-Ist<br>Div | 10Yrs Industry<br>04 Yrs Teaching      |   |                |                 |
| 8.     | Mrs. Kalpana Sharma                            | 30.01.1962          | Asstt.Professor        | Cconsolidate | 30,000  | M.A, M.Phil,                            | 7Yrs Industry<br>0.5 Yrs<br>Teaching   |   |                |                 |
| 9.     | Ms. Shalini Agnihotri                          | 12.12.1986          | Asstt.Professor        | Cconsolidate | 30,000  | M.BA, B.Sc(H),                          | 0.75 Yrs<br>Teaching                   |   |                |                 |
| 10.    | Mr. Anoop Kumar Gupta                          | 19.01.1974          | Asstt.Professor        | Cconsolidate | 30,000  | M.BA, B.S                               | 17Yrs Industry<br>1.75 Yrs<br>Teaching |   |                |                 |
| 11.    | Mrs. Richa Kumar                               | 27.02.1985          | Asstt.Professor        | Cconsolidate | 30,000  | M.BA, BS                                | 1.25Yrs Industry                       |   |                |                 |
| 12     | Mrs. Arpita Thukral                            | 08.01.1986          | Asstt.Professor        | Cconsolidate | 30,000  | M.BA                                    | 1.25Yrs Industry                       |   |                |                 |
| 13     | Mrs. Sushila Kumari Gupta                      | 18.12.1964          | Asstt.Professor        | Cconsolidate | 37770   | MCA                                     | 3.5 Years                              |   |                |                 |
| 14     | Mr. Jatin Vaid                                 | 28.08.1981          | Asstt.Professor        | Cconsolidate | 35700   | MBA, MIS                                | 3.5 Years                              |   |                |                 |
| 15     | Mr. Vivek Chandra Kuchal                       | 11.01.1964          | Associate Prof.        | Cconsolidate | 40000   | MBA, CA, ICWA                           | 0.6 Teac,2 Ind                         |   |                |                 |
| 16     | Mr. Rajiv Jain                                 | 17.01.1971          | Associate Prof.        | Cconsolidate | 40000   | MBA                                     | 2 Teac, 15 Ind                         |   |                |                 |
| 17     | Ms. Anu Bansal                                 | 27.07.1985          | Asstt.Professor        | Cconsolidate | 32,000  | M.Com, B.Com                            | 1. Teac                                |   |                |                 |
| 18     | Ms. M.V.Shivaani                               | 23.11.1989          | Asstt.Professor        | Cconsolidate | 25,000  | M.Com, B.Com                            | 3.5 Ind                                |   |                |                 |
| 19     | Ms. Kamna Vaid                                 | 11.03.1984          | Asstt.Professor        | Cconsolidate | 31,000  | MCA, B.Sc                               | 2.4 Teac, 2.5 Ind                      |   |                |                 |
| 20     | Mr. Nakul Anand                                | 21.08.1988          | Asstt.Professor        | Cconsolidate | 32,000  | MBA, BBA                                | 1. Teac                                |   |                |                 |

### DEPARTMENT OF PHYSICS

| S. No. | Name of the Faculty     | Date of Birth | Present Designation | Pay Scale   | Total Emoluments | % /Division | Experience in years  | Status of Approval /Recognition by University |             |             |
|--------|-------------------------|---------------|---------------------|-------------|------------------|-------------|----------------------|---|-------------|-------------|
|        |                         |               |                     |             |                  |             |                      | Date  | Discipline  | Designation |
| 1      | Dr. Ram Kishore         | 03.04.1948    | Professor           | 16400-22400 | 99898            | II          | Res -37<br>Teach-4.5 |   | -           |             |
| 2      | Dr. Poonam Tandon       | 12.09.1968    | Assoc. Professor    | 37400-67000 | 77360            | Ist         | Teach-16<br>Res-10   | 10.01.2001                                    | Physics     | Lecturer    |
| 3      | Dr. Ritu Walia          | 25.09.1971    | Assoc. Professor    | 37400-67000 | 67446            | Ist         | Teach-14<br>Res-12   | 10.01.2001                                    | Physics     | Lecturer    |
| 4      | Dr. Basant Kumar        | 26.01.1965    | Asstt. Professor    | 15600-39100 | 58749            | Ist         | Teach-11             | -   | Applied for | Lecturer    |
| 5      | Dr..Monika Aggarwal     | 24.03.1980    | Asstt. Professor    | 15600-39100 | 50988            | Ist         | Teach-6<br>Res-7     |   | Physics     |             |
| 6      | Dr. Karunapati Tripathi | 15.08.1981    | Asstt. Professor    | 15600-39100 | 51339            | Ist         | Res- 5<br>Teach-5    |   | Applied for | Lecturer    |
| 7      | Prof. K.N. Chopra       | 06.06.1945    | Professor           | Consolidate | 45000            | Ist         | Teach-7<br>Res-33    |   |             |             |
| 8      | Dr. S.K. Pandey         | 01.06.1975    | Asstt. Professor    | Consolidate | 55200            | Ist         | Teach-9<br>Res-2     | 01.01.2004<br>(in BVCOE)                      | Physics     | Lecturer    |
| 9.     | Ms. Suman Sharma        | 12.5.1982     | Asstt. Professor    | Consolidate | 37000            | Ist         | Teach-7              |   |             |             |
| 10     | Dr. Parmod Sagar        | 13.12.1947    | Professor           | Consolidate | 60000            | Ist         | Teach-44             |   |             |             |

## DEPARTMENT OF CHEMISTRY

| S.No. | Name of the Faculty   | Date of Birth | Present Designation | Pay Scale   | Total Emoluments | % /Division     | Experience in years   | Status of Approval /Recognition by University |                   |                 |
|-------|-----------------------|---------------|---------------------|-------------|------------------|-----------------|-----------------------|---|-------------------|-----------------|
|       |                       |               |                     |             |                  |                 |                       | Date  | Discipline        | Designation     |
| 1     | Dr. Kusum Sharma      | 02.03.1959    | Professor           | 37400-67000 | 96434            | Ist             | 17.5                  | May 2000                                      | Applied Chemistry | Asst. Professor |
| 2     | Dr. Puja Singh*       | 03.08.1973    | Assoc. Professor    | 37400-67000 | 77360            | Ist             | 14                    | 5.5.2000                                      | Applied Chemistry | Asst. Professor |
| 3     | Ms. Shivani Aggarwal* | 20.09.1975    | Asstt. Professor    | 15600-39100 | 58749            | Ist             | 11                    | July 2006                                     | Applied Chemistry | Lecturer        |
| 4     | Dr. Navneeta Mitra    | 02.01.1962    | Asstt. Professor    | 15600-39100 | 60348            | 2 <sup>nd</sup> | Res- 2.5<br>Teach- 13 |   |                   |                 |
| 5     | Dr. Namita K. Johar   | 28.09.1979    | Asstt. Professor    | 15600-39100 | 51983            | Ist             | 7                     | Sep 2007                                      | Applied Chemistry | Lecturer        |
| 6     | Dr. S.K. Jha          | 15.09.1966    | Asstt. Professor    | Consolidate | 57560            | lst             | Res.5<br>Teach. 13    |   | Applied Chemistry | Lecturer        |
| 7.    | Dr. Dilsha K.M.       | 01.06.1981    | Lecturer            | 8000-13500  | 38380            | lst             | Res. 5<br>Teach. 3    |   |                   |                 |
| 8     | Mr. Shankar Suman     | 25.7.1973     | Asstt. Professor    | 15600-39100 | 47400            | lst             | Res. 3<br>Teach.-8    |   |                   |                 |
| 9     | Dr. Anshu Dev         | 22.01.1980    | Asstt. Professor    | Consolidate | 35000            | lst             | Teach.-4              |   |                   |                 |

**DEPARTMENT OF MATHEMATICS**

| S.No | Name of the Faculty | Date of Birth | Present Designation | Pay Scale    | Total Emoluments | % /Division     | Experience in years               | Status of Approval /Recognition by University |             |             |
|------|---------------------|---------------|---------------------|--------------|------------------|-----------------|-----------------------------------|---|-------------|-------------|
|      |                     |               |                     |              |                  |                 |                                   | Date  | Discipline  | Designation |
| 1    | Dr. Himanshu Arora  | 24.12.1975    | Asstt. Professor    | 15600-39100  | 58749            | Ph.D            | 10.5 yrs                          | -   | -           | -           |
| 2    | Ms. Arti Kaushik    | 07.04.1976    | Asstt. Professor    | 15600-39100  | 59919            | 83.8            | 11.5 yrs                          | 2006  | Mathematics | Lecturer    |
| 3    | Nishu Gupta         | 17.08.1975    | Asstt. Professor    | 15600-39100  | 60348            | 1 <sup>st</sup> | Res-5<br>Teach- 15                |   |             |             |
| 4    | Ms. Vandana Bagla   | 28.09.1970    | Asstt. Professor    | 15600-39100  | 51983            | 71%             | 8 yrs                             | -   | -           | -           |
| 5    | Ms. Ritu Arora      | 25.07.1983    | Asstt. Professor    | Consoliddate | 38380            | 1 <sup>st</sup> | Teach 4.8<br>Industry 9<br>Months |   |             |             |
| 6    | Prof. R.L. Garg     | 07.04.1943    | Professor           | Consoliddate | 55000            | Ist             | Teach 36                          |   |             |             |
| 7    | Dr. Anil Kumar      | 15.9.1978     | Asstt. Professor    | Consoliddate | 45000            | 1st             | Teach.- 3<br>Res .6               |   |             |             |
| 8    | Ms. Ritu Goel       | 1.7.1985      | Asstt. Professor    | Consoliddate | 30000            | 1st             | Teach.- 1                         |   |             |             |
| 9    | Mr. Brahma Prakash  | 7.11.1972     | Asstt. Professor    | Consoliddate | 40000            | 1st             | Teach. -15                        |   |             |             |

**DEPARTMENT OF HUMANITIES**

| S.No. | Name of the Faculty | Date of Birth | Present Designation | Pay Scale   | Total Emoluments | % /Division     | Experience in years | Status of Approval /Recognition by University |            |             |
|-------|---------------------|---------------|---------------------|-------------|------------------|-----------------|---------------------|---|------------|-------------|
|       |                     |               |                     |             |                  |                 |                     | Date  | Discipline | Designation |
| 1     | Dr. Shikha Saxena   | 15.01.1973    | Assoc. Professor    | 37400-67000 | 82928            | 1 <sup>st</sup> | 13                  | 2000  | English    | Lecturer    |
| 2     | Ms. Parul Sharma    | 12.10.1971    | Asst. Prof.         | 15600-39100 | 57560            | Ist             | 13                  | -   | -          | -           |
| 3     | Ms. Namrata Sharma  | 20.09.1974    | Asst. Prof.         | 15600-39100 | 57560            | Ist             | 11                  | -   | -          | -           |
| 4     | Dr. Meenu Dudeja    | 09.04.1977    | Asst. Prof.         | 15600-39100 | 56390            | Ist             | 11.5                | -   | -F         | -           |
| 5     | Ms. Shalini Mishra  | 17.07.1977    | Asstt. Professor    | 8000-13500  | 41990            | Ist             | 14                  | -   | -          | -           |

**Lab Status**  
**&**  
**Details of the Labs/Workshops/Workstations available**

**ELECTRICAL AND ELECTRONICS ENGINEERING DEPARTMENT**

| <b>S. NO</b> | <b>Name of the Laboratory/Workshop. If required</b>  | <b>Year for which Lab is beeing used</b> | <b>Carpet Area (Sq.m)</b> | <b>List of Major Equipment</b>  |
|--------------|--|--|---------------------------|---|
| 1            | <b>Electrical Science / Circuit &amp; System Lab</b> | <b>I ST / II ND</b>                      | 140                       | C.R.O. 30 MHZ, Function Generator, 3 and a half Digital Multimeter (Portable Desk – Type), Digital Multimeter (Hand-held Type), D.C. Power Supply (10-30 V), D.C. Triple Power Supply (10-30 V), Signal Generator Counter, Continuously Variable Rectifier, I.C. Regulated D.C. Power Supply, Audio Amplifier, Spectrum Analyzer, DC. Shunt Motor (5 HP), Three Phase Induction Motor (3 HP), Varrious experimental kits, Wattmeters, Voltmeters, Ammeters, Single phase & Three phase load etc. Energy Meter (5-10A, 240 V), Single Phase Transformer (2 KVA, 230/0-270 V), 3-Phase Auto Transformer (5 KVA, 415 V/0-470 V).             |
| 2            | <b>EMEC-1 /EMEC-II /Electrical Machine Lab</b>       | <b>II ND</b>                             | 140                       | 2 Nos. DC Generator Set, 2 Nos. DC Motor Set, DC Motor with Mechanical Load, 12 Nos. Single Phase Transformers for (OCT, SET, Load test, Parallel operations, back to back test), 5 Nos. Three Phase Transformers for various test, Transformers for scott connections.<br><br>Parallel operation set of three phase alternator, Induction Generator, Synchronous Generator motor and exciter set for V-curve, Three phase induction with Mechanical load, Schrage motors, Synchronous Generator set to major X q and X d, Single phase induction motor for parameter calculation, AC Generator set for load test/Voltage regulation test |
| 3            | <b>EMI / Control &amp; Instrumentation Lab</b>       | <b>III RD / II ND</b>                    | 140                       | Data Acquisition System (DR DAQ)<br>Multi Application Board (Bytronics)<br>LVDT Trainer<br>Digital Strain Indicator<br>Digital Strain Indicator<br>Temperature Transducers Trainer  |



|  |  |  |   |
|--|--|--|---|
|  |  |  | <p>(ScienTech)<br/> Digital Pressure Calibrator</p> <p>Transducer and Instrumentation Trainer<br/> Thermometer<br/> Digital Multimeter<br/> Scientech 25 MHz Microcontroller Based Oscilloscope<br/> Study of Wheatstone Bridge (Portable)<br/> Metal Film Resistance of 0.5 Watt in Wooden/ Bakelite Box<br/> Study of Kelvin Bridge (Industrial)<br/> Power Supply For Kelvin Bridge (0-12 VDC/10 AMP.)<br/> Galvanometer 30-0-30 Division<br/> Conductivity Attachment For Kelvin Bridge<br/> Connecting Leads<br/> ( Current Carrying Capacity 10 Amp.)<br/> Study of Anderson Bridge</p> <p>Fixed Frequency Sine Wave Oscillator<br/> Air Core Inductance on Box<br/> Decade Capacitance Box Two Dials<br/> Sensitive Head Phone<br/> Study of Owen's Bridge<br/> Decade Inductance Boxes Two Dials<br/> Study of Desauty Bridge<br/> Hay's Bridge Measurement<br/> Crompton Potentiometer<br/> Dead Cell<br/> Electronic Standard Cell 1.018 VDC<br/> Battery 2V<br/> Study of Maxwell Inductance Bridge<br/> Decade Inductance Box Single Dial<br/> Study of Wein Bridge (Capacity Measurement)<br/> Study of Schering Bridge</p> <p>DC Motor Position Control<br/> DC Motor Speed Control<br/> Synchro Transmitter &amp; Receiver<br/> Speed Torque Characteristics of AC Servomotor<br/> Speed Torque Characteristics of DC Servomotor<br/> PID Controller<br/> PID Controller Model Process<br/> Potentiometer Error Detector<br/> AC Motor Position Control<br/> Compensator Circuit<br/> Control Transformer<br/> (Synchro)</p> |
|--|--|--|---|

|   |  |  |    |   |
|---|--|--|----|---|
|   |  |  |    | <p>Linear System Simulator<br/>Trainer for study of closed loop PID<br/>(PID Electronic Controller EDKITS)</p> <p>PC Based Analog &amp; Digital Motor Control<br/>Teaching Set Comprising of :<br/>(a) DC Motor Control Module<br/>(b) Command Potentiometer<br/>© CLIO Interface Module<br/>(d) System Power</p> <p>Scientific Digital Multimeter<br/>PC (HCL EzeeBEE)</p>   |
| 4 | <b>Advance Control Lab /<br/>Instrumentation Lab</b> | <b>IV TH</b>   | 72 | 20 Nos. TFT Screen (HP Make Computers)  |
| 5 | <b>Electric Drive Lab / Power<br/>System Lab</b>     | <b>PS-I - II ND<br/>PS-II -III RD<br/>ED - IV TH</b> | 66 | <p>Speed control of Single Phase Induction motor using single phase AC Voltage Controller.</p> <p>Speed Controller of three Phase induction motor, using three phase AC voltage controller.</p> <p>Speed control of DC Motor using Micro-controller</p> <p>Speed Control of Separately excited DC Motor by varying Armature Voltage through Single Phase fully controlled bridge controller</p> <p>To study closed loop control of separately excited DC motor</p> <p>Speed Control of DC Motor using Chopper</p> <p>Speed Control of 3 &amp; Induction motor using vector controlled AC Drives</p> <p>Exp. Set up of three Phase fully controlled bridge converter</p> <p>Experimental Set up of speed control of 3 Phase Slipring Induction Motor using static Resistance Control.</p> <p>Experimental set up for Single line to ground fault 01. Phase with Relay.</p> <p>Experimental set up for Single line to line fault 3 Phase with Relay.</p> <p>Experimental setup for Percentage biased differential Relay with 50Ω, 10A Rheostate (02Nos).</p> <p>Experimental set up to Study instantaneous over current Relay. 1 Phase.</p> <p>Experimental set up to Study over voltage. Relay Static Type.</p> <p>Experimental set up to draw characteristics of M.C.B.</p> |

|   |  |               |    |  |
|---|--|---------------|----|--|
|   |  |               |    | <p>Experimental set up to draw characteristics of Fuse and Thermal Relay in one module.</p> <p>Experimental set up to Study the IDMT E/F Relay</p> <p>CPU (HP MAKE)</p> <p>Monitor (HP MAKE)</p> <p>UPS (Microtek)</p> <p>Mouse</p> <p>KeyBoard</p> <p>ETAP Software (10 Point)</p> <p>Three Phase Transformer</p>   |
| 6 | <b>Power Electronics Lab /<br/>UEE Lab</b> | <b>III RD</b> | 66 | <p>Industrial Electronics Trainer, Study of SCR &amp; Characteristics, Study of Triac analysis &amp; Characteristics, Study of DC to DC Converter, Study of three phase diode rectifier, Study of single phase SCR rectifier, Study of single phase &amp; poly phase rectifier, Study of motor speed control using thyristor (with separate motor attachment), Study of power MOSFET characteristics, Thyristor &amp; Power Electronics Trainer, DC to AC Inverter, Parallel Inverter</p> <p>AC phase control using SCR, Fan regulator using Diac &amp; Triac, UJT characteristics &amp; relaxation oscillator, R &amp; RC firing circuits using SCR, Single phase Cycloconverter CRO, Multimeter (Rish make)</p> <p>Multimeter.</p> <p>Experimental Set up for C.T. Testing by Silsbee's method with Relay.</p> <p>Phase shifting transformer (with above set up)</p> <p>Wattmeter (75/150/300 V) 0-1-2A. S.No. 5067/06 (with above set up)</p> <p>Wattmeter (5/10A, 75/150/300V)</p> <p>Wattmeter (1/2A, 150/300/600V)</p> <p>Measurement of light intensity of different lamps and draw the curves.</p> <p>Exp. Setup for P.T. testing by comparison method with V.G/Null detector</p> <p>Decade Resistance</p> <p>Decade Capacitor</p> <p>Digital galvanometer</p> |

**EEE DEPARTMENT**

**EQUIPMENTS ADDED TO VARIOUS LAB IN YEAR 2008**

**1. Circuit & System Lab**

| Date    | Equipment   | Quantity |
|---------|---|----------|
| 1/07/08 | Fourier analysis kit of square wave and clippedsinewave | 2        |
| 1/07/08 | Transient response analysis of RLC circuit              | 2        |
| 9/07/08 | Tellegen's Theorem                                      | 2        |
|         | Ammeter DC-PMMC (0-15/30 ma)                            | 15       |
|         | Ammeter DC-PMMC (0-1/2 a)                               | 2        |
|         | Ammeter DC-PMMC (0-5/10 a)                              | 2        |
|         | PMMC Voltmeter (0-15/30V)                               | 15       |
|         | PMMC Voltmeter (0-250V)                                 | 2        |

**Electrical Science Lab**

|          |                                |    |
|----------|--------------------------------|----|
| 9/07/08  | Maximum Power Transferkit      | 2  |
| 9/07/08  | Reciprocity Theorem            | 2  |
| 9/07/08  | Milman's Theorem               | 2  |
| 9/07/08  | Single Phase Load (.25KW/step) | 1  |
|          | Ammeter (0-1A)                 | 2  |
|          | Ammeter (0-5/10 A)             | 10 |
|          | Ammeter (0-10/20A)             | 4  |
|          | Voltmeter (0-125/250 V)        | 15 |
|          | Voltmeter (0-300/600 V)        | 2  |
| 9/07/08  | Rehostat 100 $\Omega$ , 5A     | 2  |
|          | Rehostat 50 $\Omega$ , 2 A     | 2  |
|          | Rehostat 100 $\Omega$ , 1.2 A  | 4  |
| 11/04/08 | Rehostat 610 $\Omega$ , 6 A    | 2  |
|          | Rehostat 160 $\Omega$ , 1.2 A  | 3  |
|          | Rehostat 105 $\Omega$ , 1 A    | 1  |
|          |                                |    |
|          | Rehostat 250 $\Omega$ , 2.3 A  | 1  |
|          | Rehostat 100 $\Omega$ , 1.1 A  | 1  |
|          | Rehostat 100 $\Omega$ , 1 A    | 1  |
|          | Rehostat 600 $\Omega$ , 1 A    | 1  |
|          | Rehostat 200 $\Omega$ , 1 A    | 2  |

| CPU (HP MAKE) |            |      | TFT SCREEN (HP MAKE)   |      |
|---------------|------------|------|------------------------|------|
| Sr. No.       |            | Qty. | Sr. No.                | Qty. |
| INA7350247    | XGFN-8U7BI | 01   | H401-55911 CCNC728NSMT | 01   |
| INA7350227    | XGFN-8U714 | 01   | H401-55604 CCNC30RFKZ  | 01   |
| INA73502BP    | XGFN-8U991 | 01   | H401-55589 CCNC730RF8Z | 01   |
| INA735022X    | XGFN-8U785 | 01   | H401-8TB7B CCNC730RF4Z | 01   |
| INA7350239    | XGFN-8U698 | 01   | H401-55684 CCNC730RF19 | 01   |
| INA7350225    | XGFN-8U703 | 01   | H401-55633 CCNC730RDL1 | 01   |
| INA73502DR    | XGFN-8U984 | 01   | H401-58884 CCNC728NSR9 | 01   |
| INA735025D    | XGFN-8U935 | 01   | H401-5584B CCNCNSNP    | 01   |
| INA735027R    | XGFN-8U696 | 01   | H401-55694 CCNC730RDK8 | 01   |
| INA7350214    | XGFN-8U779 | 01   | H401-44962 CCNC730RFCM | 01   |
| INA7350281    | XGFN-8U787 | 01   | H401-44991 CCNCRFCB    | 01   |
| INA7350290    | XGFN-8U828 | 01   | H401-85560 CCNC7255312 | 01   |
| INA735026T    | XGFN-8U788 | 01   | H401-8T870 CCNC730RFVJ | 01   |
| INA73502F9    | XGFN-8U136 | 01   | H401-8T931 CCNC730RFVC | 01   |
| INA7350294    | XGFN-8U805 | 01   | H401-55622 CCNC730RDYL | 01   |
| INA735027M    | XGFN-8U695 | 01   | H401-55917 CCNC728NSND | 01   |
| INA735028H    | XGFN-8U824 | 01   | H401-58893 CCNC728NSNF | 01   |
| INA735029M    | XGFN-8U953 | 01   | H401-56091 CCNC728NSSM | 01   |
| INA7350260    | XGFN-8U892 | 01   | H401-3T892 CCNC730RFVH | 01   |
| INA7350237    | XGFN-8U706 | 01   | H401-56068 CCNC728NSV2 | 01   |

### 3. Advance Instrumentation Lab

### 4. Electric Drives

|         |   |    |
|---------|---|----|
| 4/1/08  | Exp. Set up of three Phase fully controlled bridge converter  | 01 |
| 4/01/08 | Experimental Set up of speed control of 3 Phase Slipping Induction Motor using static Resistance Control. | 01 |

**EEE DEPARTMENT****EQUIPMENTS ADDED TO VARIOUS LAB IN YEAR 2009-10****ELECTRICAL SCIENCE****Non Consumable Items**

| <b>S. No.</b> | <b>List of Equipment</b>              | <b>Supplier Name</b> | <b>Qty</b> | <b>Year of purchase</b> | <b>Value in Rs.</b> |
|---------------|---------------------------------------|----------------------|------------|-------------------------|---------------------|
| 1.            | Superposition Theorem Kit             | Nisco                | 03         | 2010                    | 1570.00<br>each     |
| 2.            | Thevein's Theorem Kit                 | Nisco                | 03         | 2010                    | 1570.00<br>each     |
| 3.            | Maximum Power Tx Theorem              | Nisco                | 03         | 2010                    | 1570.00<br>each     |
| 4.            | 1 Phase Auto transformer 2 kw/10 Amp. | Nisco                | 12         | 2010                    | 253.00<br>each      |
| 5.            | 1 Phase Transformer                   | Nisco                | 2          | 2010                    | 5320.00<br>each     |
| 6.            | Reistive load, Single phase           | Nisco                | 4          | 2010                    | 7195.00             |
| 7.            | Inductive load, single phase          | Nisco                | 4          | 2010                    | 8070.00<br>Each     |
| 8.            | Portable wattmeter, Dynamometer       | Nisco                | 4          | 2010                    | 1668.00<br>Each     |
| 9.            | L.P.F. wattmeter                      | Nisco                | 2          | 2010                    | 2365.00             |
| 10.           | Ammeter (0-5/10A)                     | Nisco                | 14         | 2010                    | 719.00<br>each      |
| 11.           | Ammeter (0-1/2 A)                     | Nisco                | 2          | 2010                    | 820<br>Each         |
| 12.           | Ammeter (0-10/20 A)                   | Nisco                | 2          | 2010                    | 820<br>Each         |
| 13.           | Voltmeter (0-125/250)                 | Nisco                | 6          | 2010                    | 685.00<br>Each      |
| 14.           | Voltmeter (0-125/250)                 | Nisco                | 2          | 2010                    | 820.00<br>Each      |
| 15.           | Rehostate (100Ω, 5 A)                 | Nisco                | 10         | 2010                    | 2620.00<br>Each     |
| 16.           | DC. Shunt Motor                       | Nisco                | 2          |                         | 12970.00<br>each    |
| 17.           | D.C. power supply (220 volt, 20A)     | Nisco                | 2          | 2010                    | 12000.00<br>Each    |

## **POWER ELECTRONICS LAB**

### **(PROJECT LAB) 2009-10**

| S. No. | Name of the Equipment                  | Supplier Name                | Qty.   | Year of purchase | Value in Rs.       |
|--------|--|------------------------------|--------|------------------|--------------------|
| 1.     | Microcontroller kit                    | PLC institute of electronics | 10     | 2009             | 86400.00           |
| 2.     | Carbon resistors                       | -do-                         | 4000   | 2009             | 900.00             |
| 3.     | Hookup wires                           | -do-                         | 2      | 2009             | 360.00             |
| 4.     | Wire cutter                            | -do-                         | 5      | 2009             | 360.00             |
| 5.     | CRO lead                               | -do-                         | 5      | 2009             | 2475.00            |
| 6.     | Extension power board<br>5amp<br>15amp | -do-                         | 5<br>5 | 2009             | 1575.00<br>2475.00 |
| 7.     | Digital tachometer                     | -do-                         | 1      | 2009             | 9900.00            |
| 8.     | Screw driver set with tester           | -do-                         | 1      | 2009             | 225.00             |
| 9.     | Clamp meter                            | -do-                         | 1      | 2009             | 2250.00            |
| 10.    | HRC fuse                               | -do-                         | 10     | 2009             | 108.00             |
| 11.    | Solder Iron                            | -do-                         | 1      | 2009             | 135.00             |
| 12.    | Soldering wire                         | -do-                         | 1      | 2009             | 472.50             |
| 13.    | Soldering paste                        | -do-                         | 1      | 2009             | 31.50              |
| 14.    | Cable 1.5mm<br>2.5mm                   | -do-                         | 1<br>1 | 2009             | 841.50<br>486.00   |
| 15.    | Thermo couple                          | -do-                         | 10     | 2009             | 6075.00            |
| 16.    | Ic's                                   | -do-                         | 10     | 2009             | 720.00             |
| 17.    | Ic's                                   | -do-                         | 3      | 2009             | 3240.00            |
| 18.    | Encoder for DC motor                   | -do-                         | 5      | 2009             | 2610.00            |
| 19.    | Driver IC ckt.                         | -do-                         | 1      | 2009             | 405.00             |
| 20.    | RTD                                    | -do-                         | 1      | 2009             | 292.00             |

### **CONTROL LAB (2009-10)**

| S.No. | Items detail                                  | Supplier Name | Qty. | Year of purchase | Value in Rs. |
|-------|---|---------------|------|------------------|--------------|
| 1.    | DC Motor Position Control                     | Vinytics      | 2    | 2009             | 33000.00     |
| 2.    | DC Motor Speed Control                        | Vinytics      | 2    | 2009             | 29000.00     |
| 3.    | Synchro Transmitter & Receiver                | Vinytics      | 1    | 2009             | 16000.00     |
| 4.    | Speed Torque Characteristics of AC servomotor | Vinytics      | 1    | 2009             | 15500.00     |
| 5.    | Compensation Design System                    | Vinytics      | 1    | 2009             | 10000.00     |
| 6.    | LVDT having output less than 10V, 500 mA      | Vinytics      | 2    | 2009             | 16000.00     |

#### **SENSORS : -**

1. Vibration Sensor
2. The
3. ECG Sensor
4. RTD
5. Stepper Motor 12V, 1 A
6. DC Motor 5 V, 500 mA

**SOFTWARE :-**

|                   |    |
|-------------------|----|
| LAB VIEW Software | 01 |
| NI ELVIS          | 05 |

**PLC TRAINER KIT :-**

|  |    |
|--|----|
| With Six numbers PLC Trainer application | 01 |
| HP LaserJet Printer (2014)               | 01 |

**SOFTWARE HELD WITH EEE DEPARTMENT**

|    |                       |   |  |
|----|-----------------------|---|--|
| 1. | ETAP(5.5.6 Version)   | - | Power System Simulation Software<br>Modules :<br><ul style="list-style-type: none"> <li>○ Load Flow Studies</li> <li>○ Short Circuit Analysis</li> <li>○ Harmonic Analysis</li> <li>○ Transient Analysis</li> <li>○ Stability Analysis etc</li> </ul>  |
| 2. | Lab View(8.5 Version) | - | Advance Instrumentation Software(Real Time Data Simulation Software)<br>Modules :<br><ul style="list-style-type: none"> <li>➤ <a href="#">Embedded Design</a></li> <li>➤ Control Design and Simulation</li> <li>➤ <a href="#">Image and Signal Processing</a></li> <li>➤ <a href="#">Industrial Monitoring and Control</a></li> <li>➤ Software Development</li> <li>➤ Development Report Generation &amp; Data Storage</li> </ul>  |
| 3. | PSIM(6.0 Version)     | - | Power Electronics<br><ul style="list-style-type: none"> <li>□ With PSIM's interactive simulation capability, we can change parameter values and view voltages/currents in the middle of a simulation. It is like having a virtual test bench running on your computer.</li> <li>□ We can design and simulate digital power supplies using PSIM's Digital Control Module. The digital control can be implemented in either block diagram or custom C code.</li> <li>□ PSIM has a built-in C compiler which allows us to enter your own C code into PSIM without compiling. This makes it very easy and flexible to implement your own function or control methods.</li> <li>□ We can use the Thermal Module to calculate semiconductor device losses (conduction losses and switching losses) based on the device information from manufacturers' datasheet.</li> </ul> |
| 4. | MAT LAB(6.1 Version)  | - | Advance Control System , Control Engg.,<br>Electrical Science, Circuit & Systems   |
| 5. | LADSIM                | - | UEE Lab<br><ul style="list-style-type: none"> <li>• LADSIM - Ladder Logic Editor and</li> <li>• Programmable Logic Controller Simulator</li> <li>• LADSIM is a fully-functional Ladder Logic</li> <li>• Editor and PLC Simulator that incorporates all</li> <li>• the basic functions used in PLC Programming</li> </ul>   |



**DEPARTMENT OF ELECTRONICS AND COMMUNICATION**

| S.No. | Name of the Laboratory / Workshop   | Year for which Lab has been used | Total Area of Lab/Workshop Plinth Area (sq. m.) | List of Major Equipment   |
|-------|---|----------------------------------|---|---|
| 1     | Analog Electronics Lab.-I (ETEC-251, ETEC-251M, ETCS-251, ETEE-255, ETEC-254, ETEE-254)                               | II ND                            | 72  | IC Regulated Power Supply, Oscillator, Audio Oscillator, Transistor Tester, Linear I.C. Trainer, Low Distortion Audio Generator, Function Generator, Computers(5), CRO(11), Ohm's law apparatus, zener diode kit, semiconductor diode kit, RC amplifier kit, UJT kit, semiconductor device characteristics, junction diode rectifier and filter characteristics, discrete component tester, transistor biasing technique kit, diode clipping circuits, transistor characteristics, mosfet characteristics, AC-milivolt meter, audio frequency generator, mono power supply, output power meter, push-pull amplifier, RF-LC oscillator, Weinbridge oscillator, audio amplifier with power supply, Emmitter follower with power supply, linear IC trainer, low distortion audio generator, DC mili- ammeter(100 and 500ma), DC volt meter (1v,30v). |
| 2     | Digital Circuits & Systems Lab.-I (ETEC-256, ETEE-351)  | IIND                             | 72  | Digital IC Tester (ICT 006), Logicom Iv (Ltb-809), Logic Training Board On Counters And Logic-com (Ltb-805), Function Generator (Hm- 30/4), CRO(4),PC Interface Design Trainer, 4 Bit binary decade counter, Logic training Board on counter and shift register, decade counter, flip-flop training kit, ex-or/nor training kit, decoder, power supply-13, logic gate circuit trainer, dcs binary adder subtractor demonstrator, 4 bit binary full adder subtractor, logic gate study kit, Computer   |
| 3     | Communication Systems & Circuits-Lab.(ETEC-258, ETCS-355, ETIT-360, ETEC-355, ETIT-355, ETEE-355, ETEC-358, ETEC-256) | IIND & III RD                    | 72  | Oscilloscope 30 Mhz (10) Function Generator, Computer System(5), Comsim Software,10 Mhz Function- Modulation Generator,3 Mhz Function Generator with Built in 15 Mhz Frequency Counter, 2Mhz Pulse Generator, EPABX Trainer System, Transmission line trainer, ISDN Trainer, Data Conditioning and Carrier Modulation Kit(2), Data Reconditioning and Carrier Demodulation Kit(2),  |
| 4     | Microprocessor System Lab. (ETEC-   | III RD&                          | 72  | Advance Microprocessor 8085 Trainer Kit,  |

|   |   |        |    |  |
|---|---|--------|----|--|
|   | 354, ETEE -352, ETME-351, ETEC-352, ETIT-356, ETEC-451)   | IVTH   |    | Logic Analyser-480, Microtutor 85 (S\W), Microtutor 86 (S\W), Microtutor 51 (S\W), Star 8086 Advance MP Kit, In Circuit Emulator, MDS, Computer(10), function generator card, High resolution ADC ADAM-3968, Circuit Emulator, EM Module, Microtutor-51 Hardware Lock, Logic Analyzer, MDS, Mini programmer, PC based Counter card, In Circuit emulator ADM, 14- working systems.                            |
| 5 | Microwave Engineering Lab. (ETEC-352)   | III RD | 72 | <p>Microwave benches (7) includes Klystron Tube, Frequency Meter VSWR Meter, Radiation Pattern Turn Table, Gunn Power Supply, Gunn Oscillator, Magic Tee, slotted section , tunable tube, E-Plane tee, H-Plane Tea, directional coupler and all the rectangular wave guide components,</p> <p>2-3 GHz Microstrip kit,</p> <p>7-computers for virtual lab for direct accessing with all the nodal center.</p> |
| 6 | Digital Signal Processing Lab. (ETEC-360, ETIT-356), Digital Image Processing ( ETEC-455) MATLAB (ETEC-359, ETCS-357(M) | IIIRD  | 72 | <p>DSK - 50 DSP Kit, ADSP - 2100 EVM Board, 100 Mhz DSO/50 Mhz Spectrum Analyzer, Computer (20), Hub, Printer, MATLAB Version 6.1.0.450 (R12.1), (20 users) Signal Processing Toolbox Version 5.1, (R12.1) (10 users), Filter Design Toolbox Version 2.1 (R12.1) (10 users), Simulink Version 4.1(R12.1) (10 users),</p> <p>DSP Blockset Version 4.1 (R12.1) (10 users)</p>                                  |
| 7 | VLSI Design Lab. (ETEC-356, ETEC-360, ETEC-455, ETEC-351)   | III RD | 72 | Computers (20), Printer, VLSI Trainer, Programmable Logic Trainer, CPLD/ FPGA Digital Logic design trainer, ALDEC Lock (EDA), CPLD/ FPGA IC, CPLD lab board kit, General purpose interfacing board, DC motor interface module, ALTERA VHDL SIMULATOR & SYNTHESIZER , TANNER tools for complete VLSI  |

|    |  |        |    |   |
|----|--|--------|----|---|
| 8  | Optical Communication Lab. (ETEC-453)  | IV TH  | 72 | Analog transmitter/receiver kit, digital transmitter/receiver kit, advance digital communication kit, fiber optic analog/digital link for plastic and glass fiber, fiber optic LED source, fiber optic power meter, continuity tester, ST-Connector /splice installation kit, fiber optic trainer kit, fiber optic LED,LASER, Photo Diode trainer kit, propagation/bending loss trainer kit, mux/demux TDM trainer kit.   |
| 9  | Consumer Electronics Lab. (ETIT-454)   | IV TH  | 72 | Color TV Kit, Monochrome TV, VCR Kit, VCD\CD \MP-3kit, Intercom Kit Fax Machine,EP-150 Kit, CRO (5), Function Generator, Soldering Station, FM Stereo Trainer, Stereo Tape Recorder, VCD/ACD Trainer,DTMF Telephone Trainer, fixed dual power supply, radio trainer kit.  |
| 10 | Embedded system Design Lab. (ETEC-452) | IV TH  | 72 | 8031/8051 based micro-controller trainer kit (9 no.), I/O interfacing board, Application specific kit, General purpose interface module Micro tutor AVR ATMEL controller kit<br><br>Micro tutor AVR ATMEL student kit, DSP training kit TMS 320 C5416, DSP training kit TMS 320 LF2407, Daughter interface card for TMS 320 C6711,Computer(20), printer Xilinx Startan- 3 Starter board, Code Composer Studio IDE, educational practice board for 8085, all in one general purpose board with onboard keys, 8051 IDE (10 users).LCD./matrix key board interfacing kit, 7-segment LED interfacing kit, RTC-EPROM interfacing kit, 8-bit DAC interfacing kit, stepper motor interfacing kit, relay interfacing kit 8-bit parallel ADC interfacing kit, I/O module, I2C protocol. Demonstration. |
| 11 | Matlab/ Digital Image Processing lab.  | V, VII |    | Computers, software & Matlabs   |
| 12 | Research Lab                           |        |    | Work station, desktop, colour printer, scanner/printer/copiers, LCD projector, iball talk note.   |

## **SOFTWARE HELD WITH ECE DEPARTMENT**

1. Tanner 9.2 (S- Edit and L-Edit)
2. Maxplus-II 10.2 and Quartus II 2.2
3. (VHDL simulator and synthesizer)from Altera
4. Xilinx 4.1(VHDL simulator and synthesizer)
5. FPGA Express( verilog simulator)/
6. FPGA synthesizer) from Aldec  
Simulation
7. Orcad 9.1 (VHDL simulator)
8. Multisim 2001
9. MATLAB 6.1
10. Signal processing toolbox 5.1
11. Filter Design Toolbox 2.1
12. Simulink 4.1
13. DSP Blockset 4.1
14. I-CAP Software (single User) For Ckt
15. Comsim 2001

**DEPARTMENT OF MECHANICAL ENGINEERING**

**DEPARTMENT OF MECHANICAL ENGINEERING**

| <b>Ist Year</b>  |  |   |
|------------------|--|---|
| <b>S.NO.</b>     | <b>Name of the Lab</b>   | <b>Major Equipments Available</b>   |
| 1.               | Workshop Practice (Foundry, Welding, Fitting, Moulding) (ETME-157) | Gas & Arc Welding, Vices, Copes & Drags & related accessories, Stakes, Hammers, Hack-Saws, Files, Drilling Machine and all the other tools, spot welding machine.   |
| 2.               | Drawing Hall -I / Engineering Graphics (ETME-159)                  | Drawing Boards, regular solids and various shaped wooden blocks.  |
| 3.               | Engineering. Mechanics Lab. (ETME-158)                             | Universal Force Table, Simple supported Beam Apparatus, Friction on inclined Plane, Worm & Worm wheel Apparatus, Winch Crab, Jib Crane, Simple & Compound wheel and Axle, Screw Jack, Bell Crank Liver.                         |
| <b>IInd Year</b> |  |   |
| 1.               | KOM/DOM (ETME-252)   | Mechanisms based on 3R-P, 2R-2P, Cams & Followers, Gear & gear trains, Clutches, Static & Dynamic Balancing, Gyroscope, Universal Governor, Cam Analyzer, Cut section of gear box of Martin 800, Petrol & Diesel Engine Models. |
| 2.               | MOS Lab (ETME-253)   | Universal Testing Machine, Torsion Testing Machine, Rockwell & Brinell Hardness Testing Machine, Izod & Charpy Impact Testing Machine, Fatigue Testing Machine.   |
| 3.               | MOF Lab./Fluid System Lab. (ETME-253)                              | Bernuolli's Apparatus, Cd, Cv,Cc determination apparatus, Venturimeter Apparatus, Impact of jet Apparatus, Pelton Turbine test rig, Variable speed Centrifugal Pump, Francis Turbine.   |
| 4.               | Machine Shop (ETME-254)  | Centre Lathes, Universal Milling machines, Shaper, Tool Grinding Machines, Tools, Power Hack-Saw, surface griner.   |
| 5.               | Drawing Hall -II/Machine Drawing (ETME-255)                        | Modles of Cotter Joint, Knuckle Joint, Connecting Rod, Crane Hook, gear box, Drawing Boards.  |

|                 |   |  |
|-----------------|---|--|
| 6.              | Operation Research/Numerical Analysis Lab (ETME-257/260)          | Turbo C++ Software, Tora software, MATLAB -10  |
| <b>III Year</b> |   |  |
| 1.              | Metrology Lab (ETME-451)  | Tool maker Microscope, profile projector, roughness Tester   |
| 2.              | Metal Cutting & Tool Design Lab (ETME-358)                        | Centre Lathes, Universal Milling machines, Shaper, Drilling and Tools Grinding Machine, Tools, tool post grinder, Power Hack-Saw. Tool Dynamometers, travelling microscope.  |
| 3.              | Drawing Hall -II/Machine Design Lab.(ETME-353)                    | Models of Cotter Joint, Knuckle Joint, Connecting Rod, Crane Hook, gear box, Drawing Boards.   |
| 4.              | CAD/Machine Design (Pro-E Lab) (ETME-352/457)                     | Pro- wild fire -5.0 (50 Licenses); Pro-E 2001 software – 150 Licenses, Solid Edge – Unlimited licenses; NX 7.0 – 5 license.  |
| <b>IV Year</b>  |   |  |
| 1.              | Quality control and Quality Assurance Lab (ETME-452)              | Unknown distribution Bowl, Balls apparatus, , shewharts Normal bowl apparatus, verniers, weighing machines and trays.  |
| 2.              | Refrigeration and Air-conditioning Lab./IC Engine Lab. (ETME-457) | 3 experiments test rigs with full instrumentations (Refrigeration Test Rig, Air-conditioning Test Rig, Ice Candy Ice Plant.  |
| 3.              | CAM -Flexible Manufacturing (ETME-453/454)                        | FMS system with 6 axis robot, ASRS, Conveyor system, rotary arm robot, CNC milling machine, CNC Lathe – FANUC Controls, CNC Lathe – MCL 10, CNC train Software, Workspace Software.  |
| 4.              | Mechatronics Lab/AMM (FMS) (ETME-455)                             | Electro pneumatic sequence trainer, LAD SIM software, pneumatic sequel trainer. PLC with Experimental modules a) Lift b) Pick & Place Robot Arm c) Start Delta Control for 3 Phase Modules, d) Reaction Vessel, e) Sequential Switching of Motors, f) Seven Segment display, 8051 Development Kit with Software, Multi Application Board, EDM Machine, Espirit CAM Software. PLC (Allenbradley 10 I/O – 18 no.); 8052 microcontroller kits (10 numbers) and software, 5 Training kits with Allenbradley Microcontroller (3 digital & 2 analog) , HMI, ac drives and ac motors, 5 license Scada software. |
| 5.              | CAD/Machine Design (Pro-E Lab) (ETME-352/457)                     | Pro-E software – 150 Licences, Education version- 2001.Pro-E Wildfire 5.0- 50 licences, Educational Version,2009   |

|    |  |   |
|----|--|---|
| 6. | Heat Engine (ICPC) cum Workshop (ETME-456) | ASME distillation apparatus, viscometers, flash pointed apparatus |
|----|--|---|

**List of Equipments added in MAE Labs in the year 2011-12**

1) Machine Shop: Surface grinder, Industrial Milling machine

2) Mechatronics: PLC (Allenbradley 10 I/O – 18 no.); 8052 microcontroller kits (10 numbers) and software, 5 Training kits with Allenbradley Microcontroller (3 digital & 2 analog), HMI, ac drives and ac motors, 5 license Scada software

| S.No. | Name of the Laboratory / Workshop                               | Total Area of Lab /Workshop Plinth Area (sq. m) | List of Major Equipment  |
|-------|---|---|--|
| 1     | Engineering. Mechanics Lab. (ETME-158)                          | 72+72=144                                       | Universal Force Table, Simple supported Beam Apparatus, Friction on inclined Plane, Worm & Worm wheel Apparatus, Winch Crab, Jib Crane, Simple & Compound wheel and Axle, Screw Jack, Bell Crank Lever.  |
| 2     | KOM/DOM (ETME-252)  | 66  | Mechanisms based on 3R-P, 2R-2P, Cams & Followers, Gear & gear trains, Clutches, Static & Dynamic Balancing, Gyroscope, Universal Governor, Cam Analyzer, Cut section of gear box of Martin 800, Petrol & Diesel Engine Models.  |
| 3     | Quality control and Quality Assurance Lab (ETME-452)            | 66  | Unknown distribution Bowl, Balls apparatus, , shewharts Normal bowl apparatus .  |
| 4     | Refrigeration and Airconditioning Lab./IC Enine Lab. (ETME-457) | 66  | 3 experiments test rigs with full instrumentations (Refrigeration Test Rig, Air-conditioning Test Rig, Ice Candy Ice Plant.  |
| 5     | Metrology Lab (ETME-451)  | 66  | Tool maker Microscope, profile projector, roughness Tester   |
| 6     | CAM -Flexible Manufacturing (ETME-453/454)                      | 66  | FMS system with 6 axis robot, ASRS, Conveyor system, rotary arm robot, CNC milling machine, CNC Lathe – FANUC Controls, CNC Lathe – MCL 10, CNC train Software, Workspace Software.  |
| 7     | Mechatronics Lab/AMM (FMS) (ETME-455)                           | 125   | Electro pneumatic sequence trainer, LAD SIM software, pneumatic sequel trainer. PLC with Experimental modules a) Lift b) Pick & Place Robot Arm c) Start Delta Control for 3 Phase Modules, d) Reaction Vessel, e) Sequential Switching of Motors, f) Seven Segment display, 8051 Development Kit with Software, Multi Application Board, EDM Machine, Espirit CAM Software. |
| 8     | MOS Lab (ETME-253)  | 125   | Universal Testing Machine, Torsion Testing Machine, Rockwell & Brinell Hardness Testing Machine, Izod & Charpy Impact Testing Machine, Fatigue Testing Machine.  |
| 9     | MOF Lab./Fluid System Lab. (ETME-253)                           | 140   | Bernuolli's Apparatus, Cd, Cv,Cc determination apparatus, Venturimeter Apparatus, Impact of jet Apparatus, Pelton Turbine test rig, Variable speed Centrifugal Pump, Francis Turbine.  |

|    |  |     |   |
|----|--|-----|---|
| 10 | Workshop Practice<br>(Foundry, Welding,<br>Fitting, Moulding) (ETME-<br>157) | 170 | Gas & Arc Welding, Vices, Copes & Drags & related accessories, Stakes, Hammers, Hack-Saws, Files, Drilling Machine and all the other tools, spot welding machine. |
| 11 | Machine Shop/Metal<br>Cutting & Tool Design Lab<br>(ETME-254/358)            | 170 | Centre Lathes, Universal Milling machines, Shaper, Drilling and Tools Grinding Machine Tools, tool post grinder, Power Hack-Saw. Surface grinder, Dynamometer.    |
| 12 | Drawing Hall -I/<br>Engineering Graphics<br>(ETME-159)                       | 170 | Drawing Boards,<br>regular solids and various shaped wooden blocks.   |
| 13 | Drawing Hall -II/Machine<br>Design Lab./Machine<br>Drawing (ETME-255/353)    | 66  | Modles of Cotter Joint, Knuckle Joint, Connecting Rod, Crane Hook, gear box, Drawing Boards.  |
| 14 | CAD/Machine Design (Pro-<br>E Lab) (ETME-352/457)                            | 66  | Pro-E software – 150 Licences, Education version-2001.  |
| 15 | Operation<br>Research/Numerical<br>Analysis Lab (ETME-<br>257/260)           | 66  | Turbo C++ Software, Tora software, MATLAB -10   |



**DEPARTMENT OF COMPUTER SCIENCE ENGINEERING**

| <b>S.NO</b> | <b>NAME OF THE LABORATORY/WORKSHOP</b>                               | <b>TOTAL AREA OF LAB/WORKSHOP (Carpet Area in sqm.)</b> | <b>LIST OF MAJOR EQUIPMENT</b>   |
|-------------|--|---|--|
| 1           | Introduction to Auto CAD Office Automation and Web Design (ETCS 155) | 66  | 72 No's Computer Nodes<br>01 No's Dot Matrix Printer<br>01 No's LaserJet Printer<br>01 No's Switch 24 Port                       |
| 2           | C Programming Lab. ( ETCS 156)                                       | 66  | 72 No's Computer Nodes<br>01 No's Dot Matrix Printer<br>01 No's Switch 24 Port   |
| 3           | Object Oriented Programming using C++ Lab. (ETIT 255)                | 66  | 24 No's Computer Nodes<br>01 No's Dot Matrix Printer<br>01 No's LaserJet Printer<br>01 No's Switch 24 Port                       |
| 4           | Data Structures Lab. (ETCS 257)                                      | 66  | 24 No's Computer Nodes<br>01 No's Dot Matrix Printer<br>01 No's Switch 24 Port   |
| 5           | Software Engineering Lab.(ETCS252)                                   | 66  | 24 No's Computer Nodes<br>01 No's Dot Matrix Printer<br>01 No's Switch 24 Port   |
| 6           | Algorithm Analysis and Design Lab. (ETCS254)                         | 66  | 24 No's Computer Nodes<br>01 No's Dot Matrix Printer<br>01 No's LaserJet Printer<br>01 No's Switch 24 Port                       |
| 7           | Computer Graphics Lab.(ETCS 258)                                     | 66  | 24 No's Computer Nodes<br>01 No's Dot Matrix Printer<br>01 No's Switch 24 Port   |
| 8           | Java Programming & Website Design Lab.(ETIT 353)                     | 66  | 24 No's Computer Nodes<br>01 No's Dot Matrix Printer<br>01 No's Switch 24 Port   |
| 9           | Linux & X-Windows Programming Lab. (ETCS 355)                        | 66  | 24 No's Computer Nodes<br>01 No's Dot Matrix Printer<br>01 No's Switch 24 Port   |
| 10          | Database Management Systems Lab. (ETCS 357)                          | 66  | 24 No's Computer Nodes<br>01 No's Dot Matrix Printer<br>01 No's Switch 24 Port   |
| 11          | Object Oriented Software Engineering ETCS354                         | 66  | 24 No's Computer Nodes<br>01 No's Dot Matrix Printer<br>01 No's Switch 24 Port   |
| 12          | Data Warehousing & Data Mining Lab.ETCS 358                          | 66  | 24 No's Computer Nodes<br>01 No's Dot Matrix Printer<br>01 No's Switch 24 Port   |
| 13          | Multimedia Technologies Lab. (ETCS 360)                              | 66  | 24 No's Computer Nodes<br>01 No's Dot Matrix Printer<br>01 No's Switch 24 Port<br>01 No's Scanner<br>02 No's Digital Camera Sony |
| 14          | Advanced Computer Network Lab.                                       | 66  | 24 No's Computer Nodes   |

|    |  |    |  |
|----|--|----|--|
|    | (ETIT 451)                                 |    | 01 No's Dot Matrix Printer<br>01 No's Switch 24 Port<br>06 No's Hub<br>01 No's Switch<br>01 No's Router<br>04 No's Crimping Tools<br>20 No's NIC (Gigabit)<br>NIC (Fast Ethernet)<br>CAT-5e Cable<br>Fiber Cable<br>RJ-45 Connectors<br>Window 2000 Server Kit (LJ Technician)                           |
| 15 | Artificial Intelligence Lab.<br>(ETCS 452) | 66 | 24 No's Computer Nodes<br>01 No's Dot Matrix Printer<br>01 No's Switch 24 Port   |
| 16 | Compiler Construction Lab. (ETCS 453)      | 66 | 24 No's Computer Nodes<br>01 No's Dot Matrix Printer<br>01 No's Switch 24 Port   |
| 17 | Mobile Computing Lab. (ETCS/ETIT-457)      | 66 | 24 No's Computer Nodes<br>01 No's Dot Matrix Printer<br>01 No's LaserJet Printer<br>01 No's Switch 24 Port   |
| 18 | Software Testing Lab.<br>ETCS 454          | 66 | 24 No's Computer Nodes<br>01 No's Dot Matrix Printer<br>01 No's Switch 24 Port   |
| 19 | Mobile Communication Lab. ( ETCS 456)      | 66 | 24 No's Computer Nodes<br>01 No's Dot Matrix Printer<br>01 No's LaserJet Printer<br>01 No's Switch 24 Port   |
| 20 | Embedded System Lab.<br>(ETEC452)          | 66 | 24 No's Computer Nodes<br>01 No's Dot Matrix Printer<br>01 No's LaserJet Printer<br>01 No's Switch 24 Port   |
| 21 | Network Security Lab. (ETCS/ETIT-456)      | 66 | 24 No's Computer Nodes<br>01 No's Dot Matrix Printer<br>01 No's Switch 24 Port<br>06 No's Hub<br>01 No's Switch<br>01 No's Router<br>04 No's Crimping Tools<br>20 No's NIC (Gigabit)<br>NIC (Fast Ethernet)<br>CAT-5e Cable<br>Fiber Cable<br>RJ-45 Connectors<br>Window 2000 Server Kit (LJ Technician) |
| 22 | E-Commerce & ERP Lab. (ETCS/ETIT-456)      | 66 | 24 No's Computer Nodes<br>01 No's Dot Matrix Printer<br>01 No's Switch 24 Port   |

## DEPARTMENT OF INFORMATION TECHNOLOGY

| S.NO | NAME OF THE LABORATORY/WORKSHOP                          | TOTAL AREA OF LAB/WORKSHOP<br><br>(Carpet Area in sqm.) | LIST OF MAJOR EQUIPMENT  |
|------|--|---|--|
| 1    | Object Oriented Programming using C++ Lab.<br>(ETIT 255) | 66  | 24 No's Computer Nodes (PIV)<br>01 No's Dot Matrix Printer<br>01 No's LaserJet Printer<br>01 No's Switch 24 Port                     |
| 2    | Data Structures Lab. (ETCS 257)                          | 66  | 24 No's Computer Nodes (N-Computing, Core 2 due)<br>01 No's Dot Matrix Printer<br>01 No's LaserJet Printer<br>01 No's Switch 24 Port |
| 3    | Software Engineering Lab.(ETCS 252)                      | 66  | 24 No's Computer Nodes (PIV)<br>01 No's Dot Matrix Printer<br>01 No's LaserJet Printer<br>01 No's Switch 24 Port                     |
| 4    | Algorithm Analysis and Design Lab.<br>(ETCS 254)         | 66  | 24 No's Computer Nodes (PIV)<br>01 No's Dot Matrix Printer<br>01 No's LaserJet Printer<br>01 No's Switch 24 Port                     |
| 5    | Computer Graphics Lab.(ETCS 258)                         | 66  | 24 No's Computer Nodes (PIV)<br>01 No's Dot Matrix Printer<br>01 No's LaserJet Printer<br>01 No's Switch 24 Port                     |
| 6    | Java Programming & Website Design<br>Lab.(ETIT 353)      | 66  | 24 No's Computer Nodes (PIV)<br>01 No's Dot Matrix Printer<br>01 No's LaserJet Printer<br>01 No's Switch 24 Port                     |
| 7    | Database Management Systems Lab.<br>(ETCS 357)           | 66  | 24 No's Computer Nodes (PIV)<br>01 No's Dot Matrix Printer<br>01 No's LaserJet Printer<br>01 No's Switch 24 Port                     |
| 8    | Object Oriented Software Engineering<br>(ETCS 354)       | 66  | 24 No's Computer Nodes (PIV)<br>01 No's Dot Matrix Printer<br>01 No's LaserJet Printer<br>01 No's Switch 24 Port                     |
| 9    | Data Warehousing & Data Mining Lab.<br>(ETCS 358)        | 66  | 24 No's Computer Nodes (PIV)<br>01 No's Dot Matrix Printer<br>01 No's LaserJet Printer<br>01 No's Switch 24 Port                     |
| 10   | Advanced Computer Network Lab.<br>(ETIT 451)             | 66  | 24 No's Computer Nodes (PIV)<br>01 No's Dot Matrix Printer<br>01 No's LaserJet Printer<br>01 No's Switch 24 Port                     |
| 11   | Mobile Computing Lab. (ETIT 455)                         | 66  | 24 No's Computer Nodes (PIV)<br>01 No's Dot Matrix Printer<br>01 No's LaserJet Printer<br>01 No's Switch 24 Port                     |
| 12   | Software Testing Lab.<br>(ETCS 454)                      | 66  | 24 No's Computer Nodes (PIV)<br>01 No's Dot Matrix Printer<br>01 No's LaserJet Printer<br>01 No's Switch 24 Port                     |
| 13   | Multimedia Applications Lab.<br>(ETIT 453)               | 66  | 24 No's Computer Nodes (PIV)<br>01 No's Dot Matrix Printer<br>01 No's LaserJet Printer<br>01 No's Switch 24 Port                     |
| 14   | Embedded System Lab.<br>(ETEC 452)                       | 66  | 24 No's Computer Nodes (N-Computing, Core 2 due)<br>01 No's Dot Matrix Printer<br>01 No's LaserJet Printer<br>01 No's Switch 24 Port |
| 15   | Network Security Lab. (ETIT 454)                         | 66  | 24 No's Computer Nodes (PIV)<br>01 No's Dot Matrix Printer<br>01 No's LaserJet Printer<br>01 No's Switch 24 Port                     |

## DEPARTMENT OF APPLIED SCIENCES

### Department of Applied Physics

| S.No. | Name of the Laboratory / Workshop | Total Area of Lab/Workshop<br>Plinth Area (sq. m.) | List of Major Equipments |
|-------|-----------------------------------|--|--------------------------|
| 1     | Physical Lab (ETPH-151/152)       | 172  | List Attached            |

### List of Major Equipments in Applied Physics Lab

1. Acceleration due to gravity setup. (Bar Pendulum Setup).
2. Momentum of Inertia. - Flywheel.
3. A.C. Frequency, Vibration string Method. (Electric Vibration)
4. Diffraction Grating (1500lines/inches)
5. Newton's Rings Apparatus.
6. Polarimeter
7. Fresnell's Bi prism
8. Telescope.
9. Microscope
10. Optical fiber.
11. Katter's Pendulum
12. Melde's equipments
13. J.J. Thomson setup for e/m of electron.
14. Carry Foster's Bridge.
15. Potentiometer (10 wires)
16. Lee's Disk setup
17. Thermocouple setup.
18. Elastic constant of liquid measurement setup.
19. Oscilloscope- 20m Hz.
20. Signal Generator (Sine, Triangular & Square wave)
21. Hall effect apparatus
22. Planks' Constant Measurement apparatus.
23. He- Ne Laser
24. Four- Probe Apparatus
25. Malus Law Set up.

## Department of Applied Chemistry

| S.No. | Name of the Laboratory / Workshop | Total Area of Lab/Workshop<br>Plinth Area (sq. m.) | List of Major Equipments |
|-------|-----------------------------------|--|--------------------------|
| 1     | Chemistry Lab (ETCH -153/154)     | 170  | List Attached            |

### List of Major Equipment in the Chemistry Lab

| S.No. | Articles   | Bill No.                        | Date   | Total Qty                            | Damage | Balance (31/05/08)         |
|-------|--|---------------------------------|--|--------------------------------------|--------|----------------------------|
| 1.    | Distillation Plant (Steel)   | 1865011                         | 11/1/2000<br>1/6/2006                                | 1 Nos.<br>1 Nos.                     |        | 2 Nos.                     |
| 2.    | Digital Ph Meter (162-R)   | 185322212                       | 11/10/1999<br>22/02/2000                             | 4 Nos.<br>5 Nos.                     |        | 9 Nos.                     |
| 3.    | Distillation Plant (Glass)   | 18532<br>AR/R/0068              | 12.10.1999<br>04.06.2009                             | 1 Nos.<br>1 Nos.                     |        | 1 Nos.<br>1 Nos.           |
| 4.    | Electrical Balance (Single Pan, Verbal)  | 185323836                       | 12/10/2009<br>01/08/2001                             | 3 Nos.<br>3 Nos..                    |        | 6 Nos.                     |
| 5.    | Electrical Disc Balance<br>1) L.C=0.1 gm<br>2) L.C=0.01 gm<br>L.C=0.001 gm                             | 593<br>AR/R.0068<br>061         | 06.06.2006<br>04.06.2009<br>18.02.2008               | 1 Nos.<br>1 Nos.<br>1 Nos.           |        | 1 Nos.<br>1 Nos.<br>1 Nos. |
| 6.    | UV Spectrophotometer (Labtronics, Single Beam)<br>UV Spectrophotometer (Labtronics, Single Beam LT-30) | AR/R/00428<br><br>AR/R/0068     | 21/02/2008<br><br>04/06/2009                         | 1 Nos.<br><br>4 Nos.                 |        | 1 Nos.<br><br>4 Nos.       |
| 7.    | Digital Conductivity   | 18532<br>2212<br>20644<br>21465 | 12/10/1999<br>22/02/2000<br>02/08/2003<br>22/12/2004 | 4 Nos.<br>5 Nos.<br>6 Nos.<br>4 Nos. |        | 19 Nos.                    |

### Humanities Department

| S.No. | Name of the Laboratory / Workshop          | Total Area of Lab/Workshop<br>Plinth Area (sq. m.) | List of Major Equipments              |
|-------|--|--|---------------------------------------|
| 1     | Communication and Skill Lab (ETCH-111/114) | 72   | 25, Computers, Language Lab. Software |

### Status of Computer Lab

| S.No | Programmes   | Number and Configuration in the existing terminals  | Available Software                | Quantity and Quality of peripherals           |
|------|--|---|-----------------------------------|---|
| 1    | Introduction to Auto CAD Office Automation and Web Design (ETCS-155) | 72 No's Computer Nodes (Core 2 Duo Processor( E7500 2.93 GHz, 4GB RAM, 320 GB HDD, DVD-Combo), 01 No's Dot Matrix Printer, 01 No's LaserJet Printer, 01 No's Switch 24 Port | Autocad, Open Office, C/C++ (OSS) | 72 No's, All is in working and good condition |
| 2    | C Programming Lab. (ETCS- 156)                                       | 72 No's Computer Nodes (Core 2 Duo Processor( E7500 2.93 GHz, 4GB RAM, 320 GB HDD, DVD-Combo), 01 No's Dot Matrix Printer, 01 No's LaserJet Printer, 01 No's Switch 24 Port | C/C++ (OSS)                       | 72 No's, All is in working and good condition |
| 3    | Object Oriented Programming using C++ Lab. (ETIT 255)                | 24 No's Computer Nodes (P4 3GHz, 512MB RAM, 80GB HDD, CD-RW), 01 No's Dot Matrix Printer, 01 No's LaserJet Printer, 01 No's Switch 24 Port                                  | C/C++ (OSS)                       | 24 No's, All is in working and good condition |
| 4    | Data Structures Lab. (ETCS - 257)                                    | 24 No's Computer Nodes (P4 3GHz, 512MB RAM, 80GB HDD, CD-RW), 01 No's Dot Matrix Printer, 01 No's Switch 24 Port  | C/C++ (OSS)                       | 24 No's, All is in working and good condition |
| 5    | Software Engineering Lab. (ETCS-252)                                 | 24 No's Computer Nodes (P4 3GHz, 512MB RAM, 80GB HDD, CD-RW), 01 No's Dot Matrix Printer, 01 No's Switch 24 Port  | RRSP                              | 24 No's, All is in working and good condition |
| 6    | Algorithm Analysis and Design Lab. (ETCS-254)                        | 24 No's Computer Nodes (P4 3GHz, 512MB RAM, 80GB HDD, CD-RW), 01 No's Dot Matrix Printer, 01 No's LaserJet Printer, 01 No's Switch 24 Port                                  | C/C++ (OSS)                       | 24 No's, All is in working and good condition |
| 7    | Computer Graphics Lab. (ETCS-258)                                    | 24 No's Computer Nodes (P4 3GHz, 512MB RAM, 80GB HDD, CD-RW), 01 No's Dot Matrix Printer, 01 No's Switch 24 Port  | C/C++ (OSS)                       | 24 No's, All is in working and good condition |
| 8    | Java Programming & Website Design Lab. (ETIT-353)                    | 24 No's Computer Nodes (P4 3GHz, 512MB RAM, 80GB HDD, CD-RW), 01 No's Dot Matrix Printer, 01 No's Switch 24 Port  | Java, NetBeans (OSS)              | 24 No's, All is in working and good condition |
| 9    | Linux & X-Windows Programming Lab. (ETCS 355)                        | 24 No's Computer Nodes (P4 1.7GHz, 256MB RAM, 60GB HDD, CD-ROM), 01 No's Dot Matrix Printer, 01 No's Switch 24 Port   | Linux (OSS)                       | 24 No's, All is in working and good condition |
| 10   | Database Management Systems Lab. (ETCS 357)                          | 24 No's Computer Nodes (P4 3GHz, 512MB RAM, 80GB HDD, CD-RW), 01 No's Dot Matrix Printer, 01 No's Switch 24 Port  | Oracle 10g XE MYSQL(OSS)          | 24 No's, All is in working and good condition |
| 11   | Object Oriented Software Engineering (ETCS-354)                      | 24 No's Computer Nodes (P4 2.4GHz, 256MB RAM, 80GB HDD, CD-RW), 01 No's Dot Matrix Printer, 01 No's Switch 24 Port  | RRSP                              | 24 No's, All is in working and good condition |
| 12   | Data Warehousing & Data Mining Lab. (ETCS-358)                       | 24 No's Computer Nodes (P4 1.7GHz, 256MB RAM, 60GB HDD, CD-ROM), 01 No's Dot Matrix Printer, 01 No's Switch 24 Port   | MYSQL(OSS) WEKA (OSS)             | 24 No's, All is in working and good condition |

|    |  |  |                         |   |
|----|--|--|-------------------------|---|
| 13 | Multimedia Technologies Lab.<br>(ETCS 360) | 24 No's Computer Nodes (P4 3GHz, 512MB RAM, 80GB HDD, CD-RW), 01 No's Dot Matrix Printer, 01 No's Switch 24 Port, 01 No's Scanner, 02 No's Digital Camera Sony   | Maya                    | 24 No's, All is in working and good condition |
| 14 | Advanced Computer Network Lab. (ETIT 451)  | 24 No's Computer Nodes (P4 3GHz, 512MB RAM, 80GB HDD, CD-RW), 01 No's Dot Matrix Printer, 01 No's Switch 24 Port , 06 No's Hub, 01 No's Switch, 01 No's Router, 04 No's Crimping Tools, 20 No's NIC (Gigabit), NIC (Fast Ethernet), CAT-5e Cable, Fiber Cable, RJ-45 Connectors, Window 2000 Server Kit (LJ Technician)    | NS2 (OSS), Router (OSS) | 24 No's, All is in working and good condition |
| 15 | Artificial Intelligence Lab. (ETCS-452)    | 24 No's Computer Nodes (P4 2.4GHz, 256MB RAM, 80GB HDD, CD-ROM), 01 No's Dot Matrix Printer, 01 No's Switch 24 Port  | Prolog (OSS)            | 24 No's, All is in working and good condition |
| 16 | Compiler Construction Lab. (ETCS 453)      | 24 No's Computer Nodes (P4 Dual Core 2.2GHz, 2 GB RAM, 160GB HDD, DVD-RW), 01 No's Dot Matrix Printer, 01 No's Switch 24 Port  | C/C++ (OSS)             | 24 No's, All is in working and good condition |
| 17 | Mobile Computing Lab. (ETCS/ETIT-457)      | 24 No's Computer Nodes (P4 Dual Core 2.2GHz, 2 GB RAM, 160GB HDD, DVD-RW), 01 No's Dot Matrix Printer, 01 No's LaserJet Printer, 01 No's Switch 24 Port  | NS2 (OSS), WML (OSS)    | 24 No's, All is in working and good condition |
| 18 | Software Testing Lab. (ETCS 454)           | 24 No's Computer Nodes (P4 Dual Core 2.2GHz, 1 GB RAM, 160GB HDD, DVD-RW), 01 No's Dot Matrix Printer, 01 No's Switch 24 Port  | RRSP                    | 24 No's, All is in working and good condition |
| 19 | Mobile Communication Lab. (ETCS 456)       | 24 No's Computer Nodes (P4 Dual Core 2.2GHz, 2 GB RAM, 160GB HDD, DVD-RW), 01 No's Dot Matrix Printer, 01 No's LaserJet Printer, 01 No's Switch 24 Port  | NS2 (OSS), WML (OSS)    | 24 No's, All is in working and good condition |
| 20 | Network Security Lab. (ETCS/ETIT-456)      | 24 No's Computer Nodes (P4 1.7GHz, 256MB RAM, 60GB HDD, CD-ROM), 01 No's Dot Matrix Printer, 01 No's Switch 24 Port , 06 No's Hub, 01 No's Switch, 01 No's Router, 04 No's Crimping Tools, 20 No's NIC (Gigabit), NIC (Fast Ethernet), CAT-5e Cable, Fiber Cable, RJ-45 Connectors, Window 2000 Server Kit (LJ Technician) | NS2 (OSS), Router (OSS) | 24 No's, All is in working and good condition |
| 21 | E-Commerce & ERP Lab. (ETCS/ETIT-456)      | 24 No's Computer Nodes (P4 3GHz, 512MB RAM, 80GB HDD, CD-RW), 01 No's Dot Matrix Printer, 01 No's Switch 24 Port   | ERP SW (OSS)            | 24 No's, All is in working and good condition |

## Annexure VII

### Details of Computer Centre

| Name of Laboratory | No. of Computers with configuration  | Other Equipment (LAN/Servers/Printers/Firewall etc.)  | Legal Software (System & Application) |
|--------------------|--|---|---------------------------------------|
| Computer Centre    | Total 40 No's<br><br>08 No.'s - HP Pro 3090 - Intel C2D 2.93 GHz.HTT 1066 MHz. FSB/4 GB DDR3 RAM/320 GB HDD/ Keyboard/Optical Mouse/10/100/1000 Mbps NIC/DVD-CD± Drive 15" TFT Monitor, 800 VA UPS<br><br>32 No's – LG N-Computing Systems | HP 1160 Laser Jet Printer – 01 No's<br><br>HP Scanjet G3010 Scanner- 01<br><br>Cisco 2950 Switch - 01 | As per list enclosed                  |

#### INTERNET FACILITY

| S.No. | Particulars  | Requirements as per Norms (1:4 for Engg., 1:6 for Pharmacy/ HMCT/Arch./Applied Arts and 1:2 for MBA/MCA) | Availability  |
|-------|--|--|---|
| 1.    | No. of Computer Terminals  |  | 797 + 75  |
| 2.    | Hardware Specification   |  |   |
|       | <ul style="list-style-type: none"> <li>• Server/P-IV/Latest Configuration</li> </ul> |  | 797 + 75  |
| 3.    | No of terminals of LAN/WAN   |  | All Terminals 797 + 75  |
| 4.    | Relevant Legal Software  | Application  | System  |
|       |  |  | Application   |
|       |  |  | System  |
|       |  |  | Details given below   |
|       |  |  | Details given below   |
| 5.    | Peripheral(s)/ Printers  |  | 98  |
| 6.    | Internet Accessibility (in Kbps & hrs.)  |  | 6 Mbps RF Link & 20 Mbps Leased Line, 24 Hrs. accessibility including Hostel. |

#### DETAILS OF COMPUTER SOFTWARES

|  |   |
|--|---|
| Relevant Legal Software<br><ul style="list-style-type: none"> <li>• System Software</li> </ul> | <ul style="list-style-type: none"> <li>○ Windows 2003 Server</li> <li>○ MS BackOffice 4.5</li> <li>○ NT Server 4.0</li> </ul> |
|--|---|



|  |  |
|--|--|
| <ul style="list-style-type: none"> <li>• Application Software</li> </ul> | <ul style="list-style-type: none"> <li>○ Window 98 SE</li> <li>○ Windows 2000 Server</li> <li>○ Windows 2000 Professional</li> <li>○ Windows XP Pro.</li> <li>○ Windows Vista ultimate</li> <li>○ SCO Unix 5.0.5</li> <li>○ Red Hat Linux 7.1,7.2 &amp; 9.0</li> <li>○ Red Hat Enterpries Linux ES</li> <li>○ Red Hat Enterpries Linux 5 Adv. Server</li> <li>○ Mandrake Linux</li> <li>○ SUSE Linux</li> <li>○ Sun Solaris 8 &amp; 10 (x86)</li> <li>○ MS Office 2000 &amp; 2003 &amp; 2007 enterprise</li> <li>○ Star Office 7 (Open SW)</li> <li>○ Open Office (Open SW)</li> <li>○ Borland Turbo C/C++ Ver. 3.0/4.5</li> <li>○ Adobe PageMaker 6.5</li> <li>○ Adobe Acrobat Professional</li> <li>○ Adobe Creative Suite 3 Master Collection</li> <li>○ SUN Java Web Server</li> <li>○ Norton Internet Security Pack 2002</li> <li>○ Norton System Works 2003</li> <li>○ Symantec Antivirus</li> <li>○ Trend Micro Ent. Suite</li> <li>○ KasperSky Internet Security 6.0</li> <li>○ PCCELIEN</li> <li>○ McAfee AVSS</li> <li>○ Macromedia Flash MX</li> <li>○ Macromedia Studio MX</li> <li>○ Oracle 9i, 10g</li> <li>○ MySQL (Open SW))</li> <li>○ MSDN Academic Alliance 7.0 Win 32 Engg.</li> </ul> |
| <p>Project Development &amp; Management</p>                              | <ul style="list-style-type: none"> <li>○ Visual Studio 6.0 Pro. &amp; Ent. Version</li> <li>○ Visual Studio .NET</li> <li>○ Oracle Internet Developer Suite</li> <li>○ Rational Enterprise Suite (Seed Pkg.)</li> <li>○ Maya Unlimited 6.5</li> <li>○ Maya Unlimited 8.5</li> <li>○ cPanel &amp; WHM 11</li> <li>○ PRAMATI STUDIO &amp; SERVER (J2EE Development Tool)</li> </ul>  |

|  |  |
|--|--|
| <ul style="list-style-type: none"> <li>• Others</li> </ul> | <p style="text-align: center;"><b><u>SOFTWARE HELD WITH EEE DEPARTMENT</u></b></p> <p>1. ETAP(5.5.6 Version) - Power System Simulation Software Modules :</p> <ul style="list-style-type: none"> <li>○ Load Flow Studies</li> <li>○ Short Circuit Analysis</li> <li>○ Harmonic Analysis</li> </ul> |
|--|--|

|    |                       |  |
|----|-----------------------|--|
|    |                       | <ul style="list-style-type: none"> <li>○ Transient Analysis</li> <li>○ Stability Analysis etc</li> </ul>   |
| 2. | Lab View(8.5 Version) | <p>- Advance Instrumentation Software(Real Time Data Simulation Software)</p> <p>Modules :</p> <ul style="list-style-type: none"> <li>➤ <a href="#">Embedded Design</a></li> <li>➤ Control Design and Simulation</li> <li>➤ <a href="#">Image and Signal Processing</a></li> <li>➤ <a href="#">Industrial Monitoring and Control</a></li> <li>➤ Software Development</li> <li>➤ Development Report Generation &amp; Data Storage</li> </ul>  |
| 3. | PSIM(6.0 Version)     | <p>- Power Electronics</p> <ul style="list-style-type: none"> <li>□ With PSIM's interactive simulation capability, we can change parameter values and view voltages/currents in the middle of a simulation. It is like having a virtual test bench running on your computer.</li> <li>□ We can design and simulate digital power supplies using PSIM's Digital Control Module. The digital control can be implemented in either block diagram or custom C code.</li> <li>□ PSIM has a built-in C compiler which allows us to enter your own C code into PSIM without compiling. This makes it very easy and flexible to implement your own function or control methods.</li> <li>□ We can use the Thermal Module to calculate semiconductor device losses (conduction losses and switching losses) based on the device information from manufacturers' datasheet.</li> </ul> |
| 4. | MAT LAB(6.1 Version)  | -Advance Control System , Control Engg.,<br>Electrical Science, Circuit & Systems  |
| 5. | LADSIM                | <p>- UEE Lab</p> <ul style="list-style-type: none"> <li>• LADSIM - Ladder Logic Editor and</li> <li>• Programmable Logic Controller Simulator</li> <li>• LADSIM is a fully-</li> </ul>   |

functional Ladder Logic  
 • Editor and PLC Simulator that incorporates all  
 • the basic functions used in PLC Programming

**SOFTWARE HELD WITH MAE DEPARTMENT**

**Mechanical CAD :**

- AutoCAD 2000 & 2002 & 2008
- ProE Wild fire 5.0
- ProEngineer 2001
- Solid Edge
- NX-7.0
- Ladsim
- Bytronic (MAB)
- PLC Cross Talk SW
- CNC Train
- Allenbradley PLC s/w,
- HMI S/W
- 8052 microcontroller sw
- Aristo Robot controller sw
- Workspace
- Esprit CAM
- MAT LAB
- FMS SW

- MS BackOffice 4.5
- NT Server 4.0
- Window 98 SE
- Windows 2000 Server
- Windows 2000 Professional
- Windows XP Pro.
- Windows Vista ultimate
- SCO Unix 5.0.5
- Red Hat Linux 7.1,7.2 & 9.0 (Open SW))
- Red Hat Enterpries Linux ES
- Red Hat Enterpries Linux 5 Adv. Server
- Mandrake Linux
- SUSE Linux (OSS)
- Sun Solaris 8 & 10 (x86)

**SOFTWARE HELD WITH ECE DEPARTMENT**

1. Tanner 9.2 (S- Edit and L-Edit)
2. Maxplus-II 10.2 and Quartus II 2.2 (VHDL simulator and synthesizer)from Altera
3. Xilinx 4.1(VHDL simulator and synthesizer)
4. FPGA Express( verilog simulator)/FPGA synthesizer) from Aldec
5. Orcad 9.1 (VHDL simulator)

**Relevant Legal Software**

**Application Software**

**System Software**

|  |  |
|--|--|
| <b>System &amp; Application Software</b> | <b>Library</b><br>SoftLink<br><br><b>Accounts</b><br>Tally 6.3 eis<br><br>6. Multisim 2001<br>7. Comsim 2001<br>8. MATLAB 6.1<br>9. Signal processing toolbox 5.1<br>10. Filter Design Toolbox 2.1<br>11. Simulink 4.1<br>12. DSP Blockset 4.1 |
|--|--|